

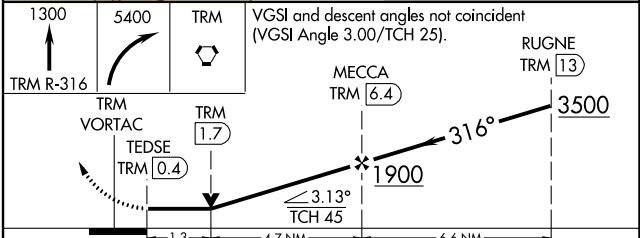
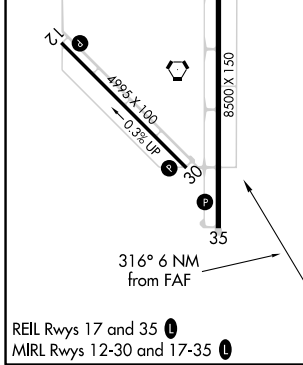
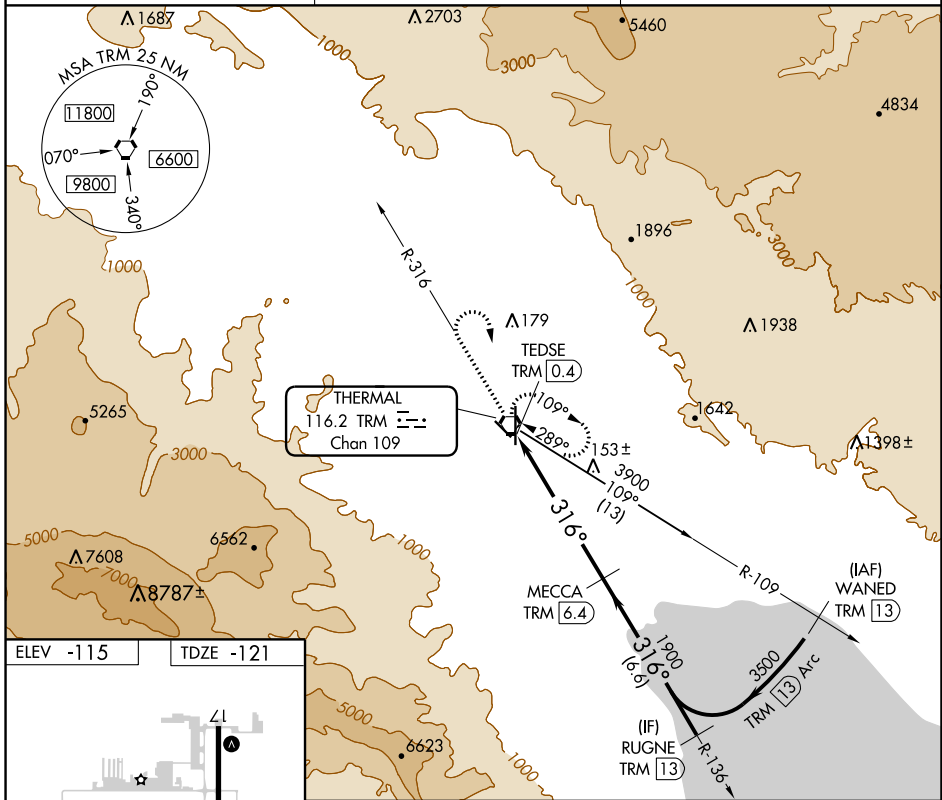
VORTAC TRM <b>116.2</b> Chan <b>109</b>	APP CRS <b>316°</b>	Rwy ldg TDZE Apt Elev <b>4995</b> <b>-121</b> <b>-115</b>
---	------------------------	--

# VOR RWY 30

JACQUELINE COCHRAN RGNL (TRM)

DME required.	MISSED APPROACH: Climb to 1300 on TRM VORTAC R-316 then climbing right turn to 5400 direct TRM VORTAC and hold, continue climb-in-hold to 5400.
<b>▽</b> <b>▲</b> Rwy 30 helicopter visibility reduction below ¾ SM NA.	

ASOS <b>118.325</b>	SOCAL APP CON* <b>135.275 251.1</b>	UNICOM <b>123.0</b> (CTAF) <b>0</b>
------------------------	--	--



CATEGORY	A	B	C	D
S-30	300-1	421 (500-1)	300-1½	421 (500-1½)
<b>☑</b> CIRCLING	320-1 435 (500-1)	340-1 455 (500-1)	460-1½ 575 (600-1½)	780-3 895 (900-3)

SW-3, 02 JAN 2020 to 30 JAN 2020

SW-3, 02 JAN 2020 to 30 JAN 2020