

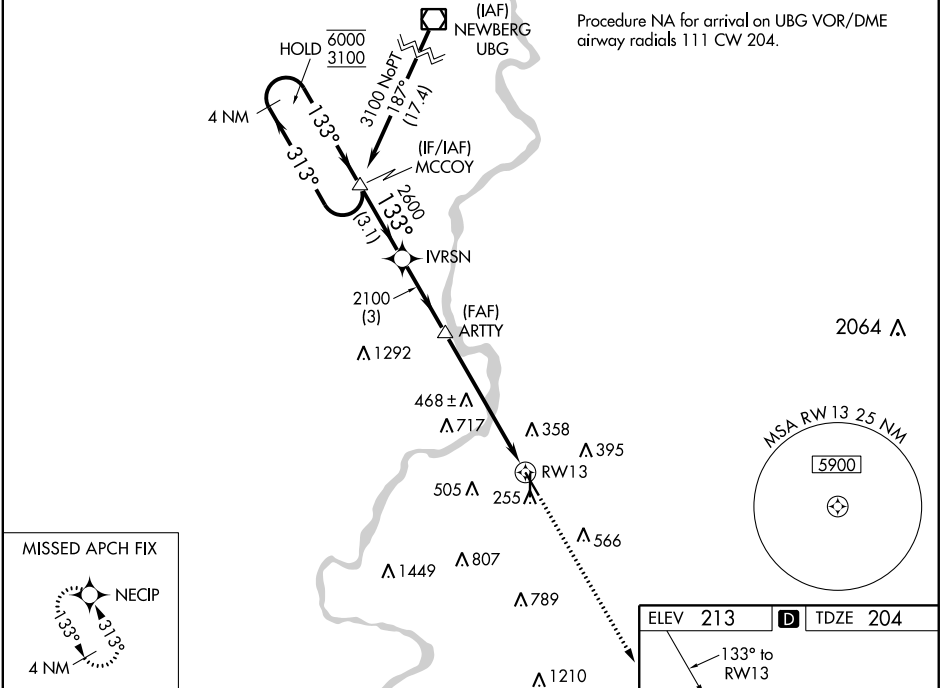
WAAS CH <b>97642</b> <b>W13A</b>	APP CRS <b>133°</b>	Rwy Idg TDZE Apt Elev	<b>5811</b> <b>204</b> <b>213</b>
--	------------------------	-----------------------------	---

# RNAV (GPS) RWY 13

MCNARY FIELD (SLE)

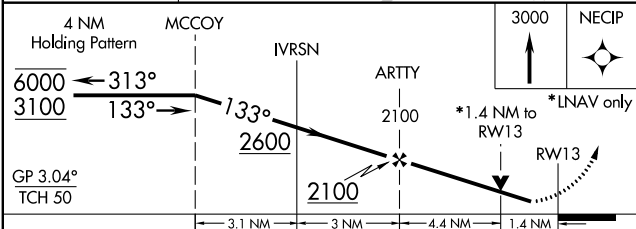
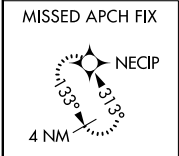
RNP APCH.	<p>Circling Rwy 16, 34 NA at night. Rwy 13 helicopter visibility reduction below 3/4 SM NA. Inop table does not apply to LNAV/VNAV all Cats. For uncompensated Baro-VNAV systems, LNAV/VNAV NA below -15°C or above 54°C.</p>	ODALS 	MISSED APPROACH: Climb to 3000 direct NECIP and hold.
<p>Procedure NA for arrival on UBG VOR/DME airway radials 111 CW 204.</p>			

ATIS <b>124.55</b>	SEATTLE CENTER <b>125.8 291.7</b>	SALEM TOWER ★ <b>119.1 (CTAF) 257.2</b>	GND CON <b>121.9</b>	UNICOM <b>122.95</b>
-----------------------	--------------------------------------	--	-------------------------	-------------------------



NW-1, 02 JAN 2020 to 30 JAN 2020

NW-1, 02 JAN 2020 to 30 JAN 2020



CATEGORY	A	B	C	D
LPV DA	454-3/4 250 (300-3/4)			
LNAV/VNAV DA	580-1 376 (400-1)			
LNAV MDA	700-3/4 496 (500-3/4)	700-1 1/4 496 (500-1 1/4)		
CIRCLING	880-1 667 (700-1)	960-1 747 (800-1)	1060-2 1/2 847 (900-2 1/2)	1260-3 1047 (1100-3)

