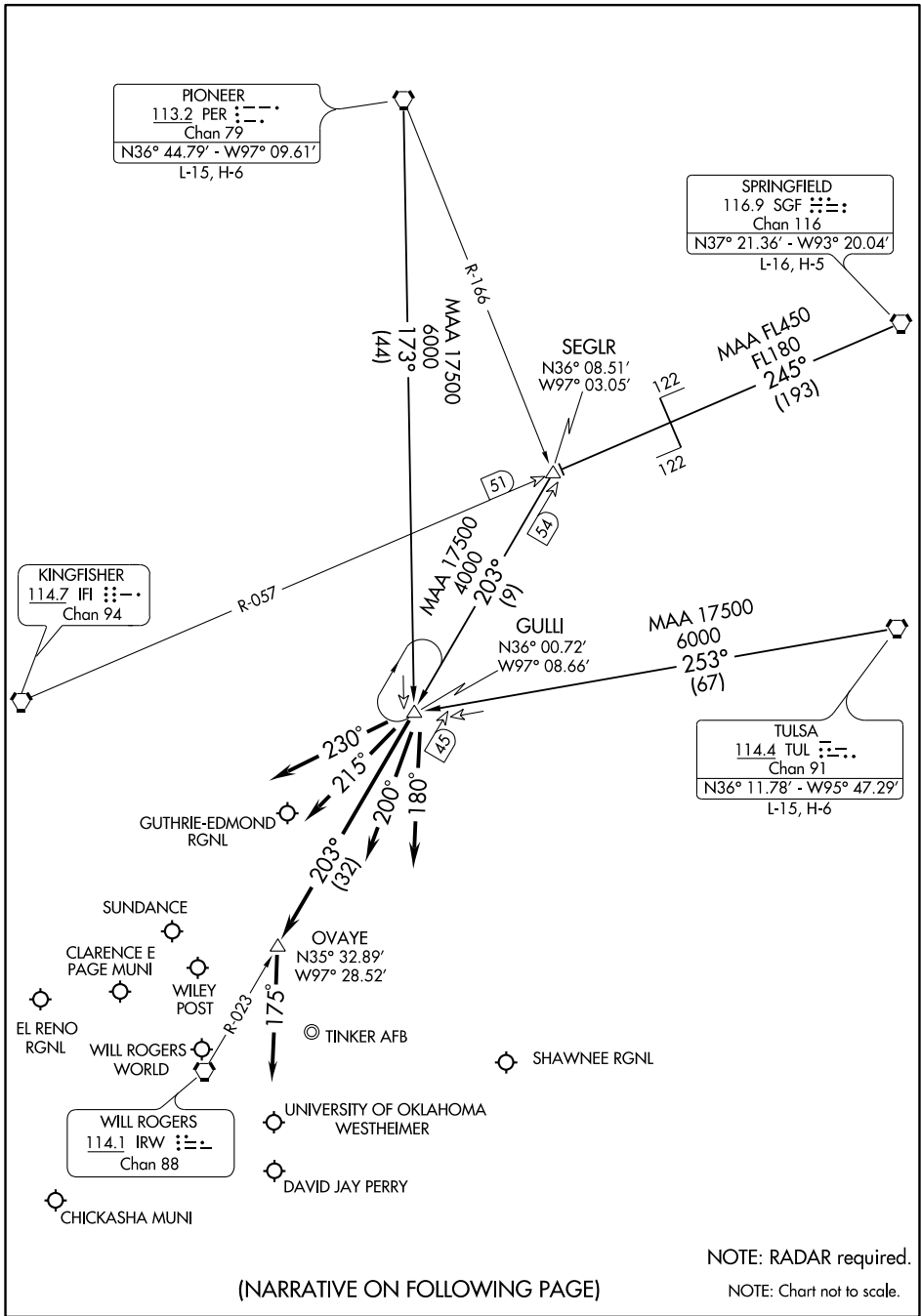


GULLI TWO ARRIVAL

OKLAHOMA CITY, OKLAHOMA



SC-1, 02 JAN 2020 to 30 JAN 2020

SC-1, 02 JAN 2020 to 30 JAN 2020

GULLI TWO ARRIVAL

(GULLI.GULLI2) 29MAR18

OKLAHOMA CITY, OKLAHOMA