

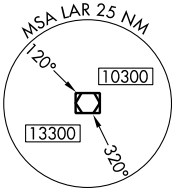
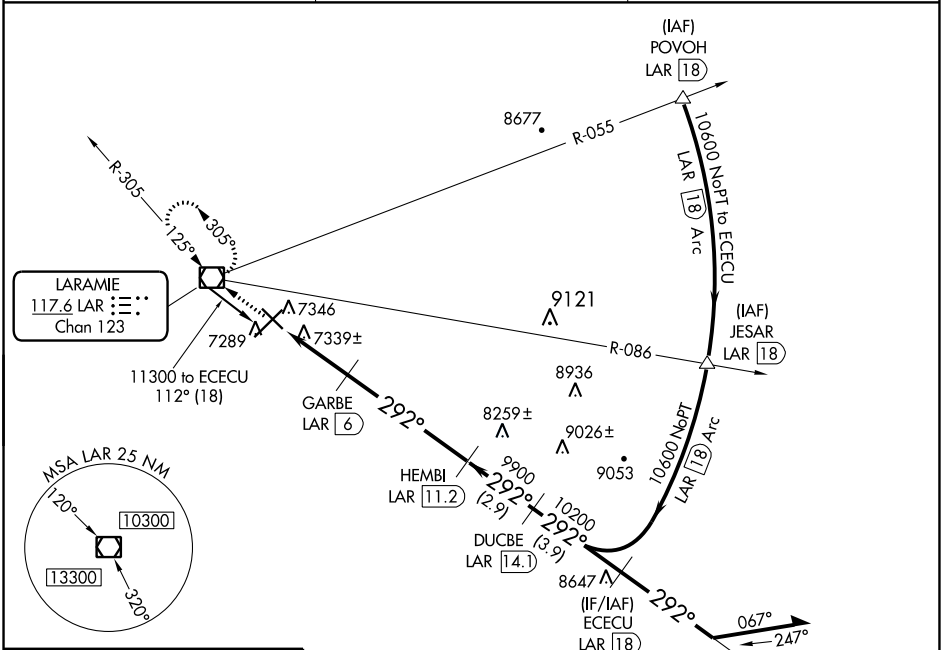
VOR/DME LAR 117.6 Chan 123	APP CRS 292°	Rwy Idg TDZE Apt Elev 6300 7278 7284
---	------------------------	--

VOR/DME RWY 30

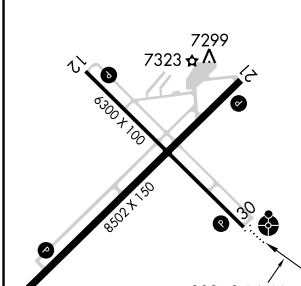
LARAMIE RGNL (LAR)

-35°C		MISSED APPROACH: Climb to 9600 direct LAR VOR/DME and hold, continue climb-in-hold to 9600.
-------	--	---

ASOS 135.475	DENVER CENTER 125.9 284.7	UNICOM 123.05 (CTAF)
------------------------	-------------------------------------	--------------------------------



ELEV 7284	D	TDZE 7278
-----------	----------	-----------



9600	LAR	ECECU LAR 18	Remain within 10 NM
↑			
	GARBE LAR 6	HEMBI LAR 11.2	DUCBE LAR 14.1
	LAR 4	LAR 3.1	LAR 3.1
	8220	9900	10200
	3.00° TCH 41	292°	292°
	0.9	2 NM	5.2 NM
			2.9 NM
			3.9 NM

CATEGORY	A	B	C	D
S-30	7600-¾	322 (400-¾)		7600-1 322 (400-1)
CIRCLING	7660-1 376 (400-1)	7740-1 456 (500-1)	7740-1½ 456 (500-1½)	7840-2 556 (600-2)

NW-1, 02 JAN 2020 to 30 JAN 2020

NW-1, 02 JAN 2020 to 30 JAN 2020