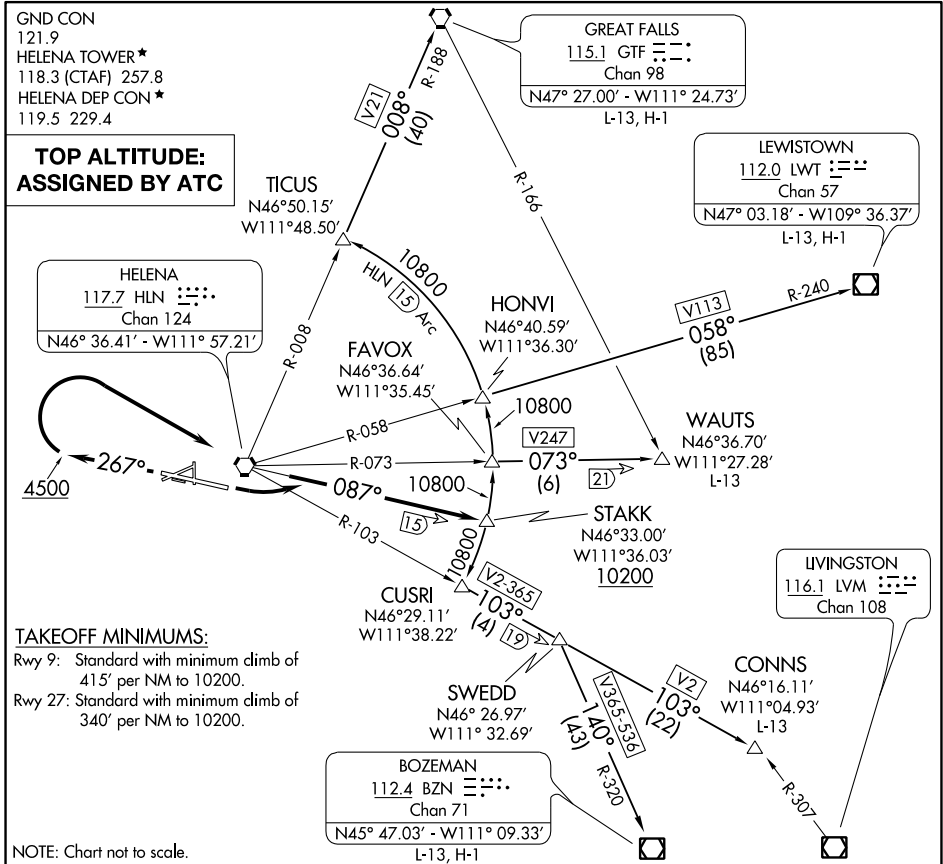


STAKK FOUR DEPARTURE



TAKEOFF MINIMUMS:

- Rwy 9: Standard with minimum climb of 415' per NM to 10200.
- Rwy 27: Standard with minimum climb of 340' per NM to 10200.

NOTE: Chart not to scale.

DEPARTURE ROUTE DESCRIPTION

TAKEOFF RUNWAY 9: Climbing left turn to intercept HLN R-087 to cross STAKK at or above 10200. Thence via transition.

TAKEOFF RUNWAY 27: Climb heading 267° to 4500 then climbing right turn direct HLN VORTAC. Continue climb on HLN R-087 to cross STAKK at or above 10200. Thence via transition.

BOZEMAN TRANSITION (STAKK4.BZN): From over STAKK on 15 DME Arc to CUSRI INT, then on HLN R-103 to SWEDD INT, then on BZN R-320 to BZN VOR/DME.

CONNS TRANSITION (STAKK4.CONNS): From over STAKK on 15 DME Arc to CUSRI INT, then on HLN R-103 to SWEDD INT, then on HLN R-103 to CONNS INT.

GREAT FALLS TRANSITION (STAKK4.GTF): From over STAKK on 15 DME Arc to FAVOX, then on 15 DME Arc to HONVI, then on 15 DME Arc to TICUS, then on HLN R-008 and GTF R-188 to GTF VORTAC.

LEWISTOWN TRANSITION (STAKK4.LWT): From over STAKK on 15 DME Arc to FAVOX, then on 15 DME Arc to HONVI, then on HLN R-058 and LWT R-240 to LWT VOR/DME.

WAUTS TRANSITION (STAKK4.WAUTS): From over STAKK on 15 DME Arc to FAVOX, then on HLN R-073 to WAUTS INT.

NW-1, 02 JAN 2020 to 30 JAN 2020

NW-1, 02 JAN 2020 to 30 JAN 2020