

WAAS CH 69405 W27A	APP CRS 267°	Rwy Idg TDZE Apt Elev	9000 3852 3877
--	------------------------	-----------------------------	---

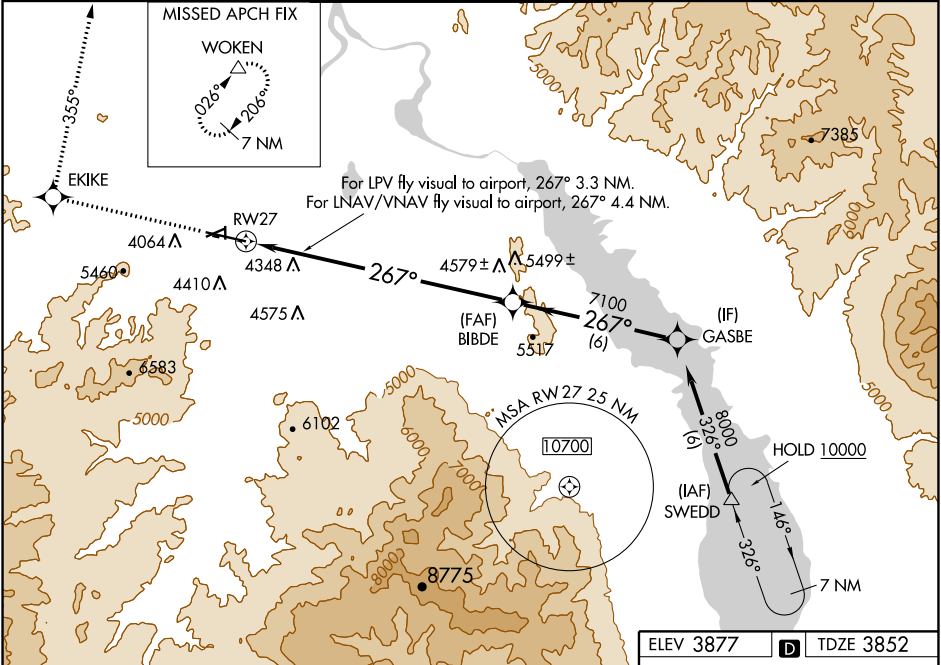
RNAV (GPS) X RWY 27

HELENA RGNL (HLN)

⚠ Circling NA for Cat D south of Rwy 9-27. For uncompensated Baro-VNAV systems, LNAV/VNAV NA below -22°C (-7°F) or above 42°C (107°F). DME/DME RNP-0.3 NA. Inoperative table does not apply to LNAV Cats A-B. Circling to Rwy 5, 23, 35 NA at night.

MALSR
⚠ MISSED APPROACH: Climb to 9000 direct EKIKE and via 355° track to WOKEN and hold.

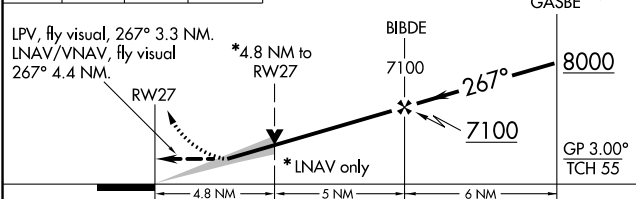
ATIS 120.4	HELENA APP CON * 119.5 229.4	HELENA TOWER * 118.3 (CTAF) 257.8	GND CON 121.9	UNICOM 122.95
----------------------	--	---	-------------------------	-------------------------



NW-1, 02 JAN 2020 to 30 JAN 2020

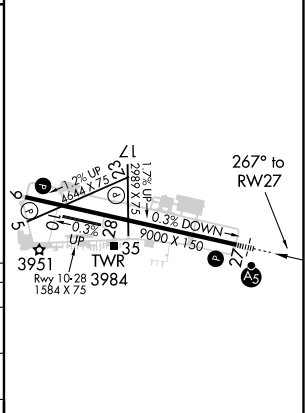
NW-1, 02 JAN 2020 to 30 JAN 2020

9000 ↑	EKIKE ✦	355° tr	WOKEN △
-----------	------------	------------	------------



ELEV 3877	D	TDZE 3852
-----------	----------	-----------

CATEGORY	A	B	C	D
LPV DA	4965-2	1113 (1100-2)	4965-3	1113 (1100-3)
LNAV/VNAV DA	5289-2	1437 (1500-2)	5289-3	1437 (1500-3)
LNAV MDA	5440-1¼ 1588 (1600-1¼)	5440-1½ 1588 (1600-1½)	5440-2½ 1588 (1600-2½)	5440-3 1563 (1600-3)
CIRCLING	5440-1¼ 1563 (1600-1¼)	5440-1½ 1563 (1600-1½)	5440-3	1563 (1600-3)



REIL Rws 9, 17 and 35
MIRL Rws 5-23 and 17-35
HIRL Rwy 9-27