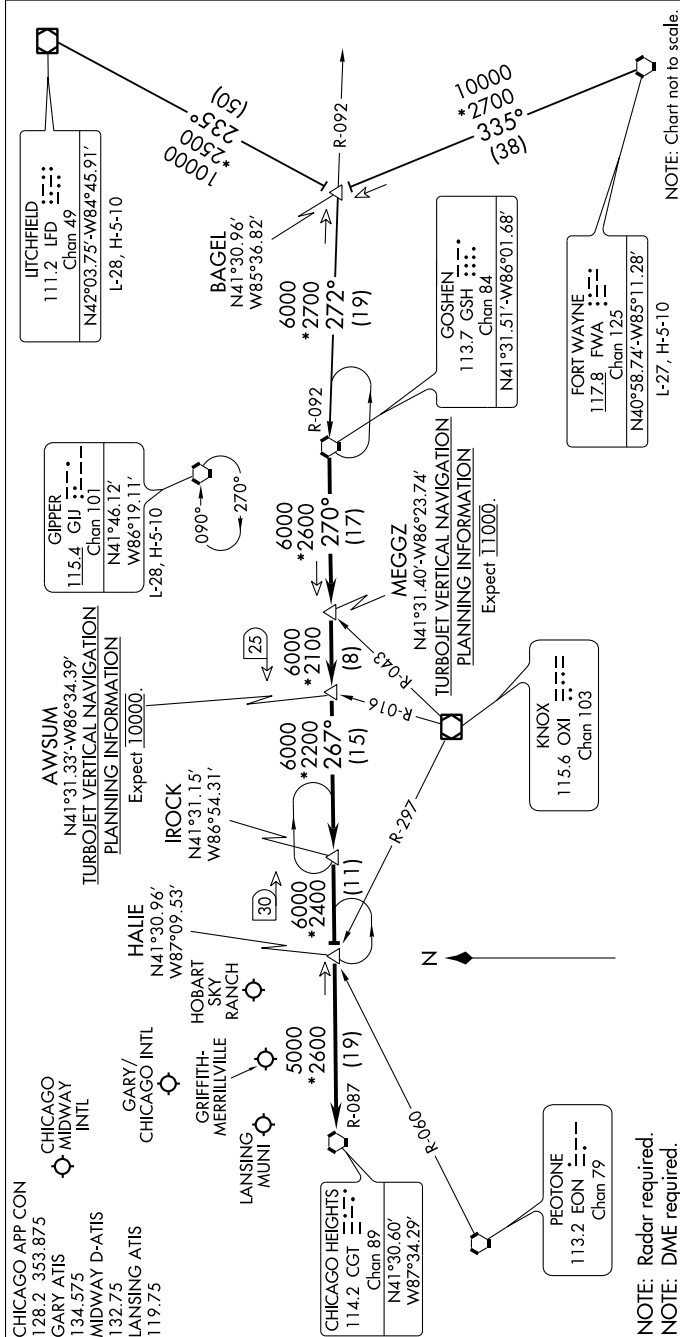


GOSHEN SEVEN ARRIVAL

AL-81 (FAA)

CHICAGO, ILLINOIS

EC-3, 02 JAN 2020 to 30 JAN 2020



ARRIVAL ROUTE DESCRIPTION

FORT WAYNE TRANSITION (FWA.GSH7): From over FWA VORTAC on FWA R-335 to BAGEL then on GSH R-092 to GSH VORTAC. Thence....
LITCHFIELD TRANSITION (LFD.GSH7): From over LFD VOR/DME on LFD R-235 to BAGEL then on GSH R-092 to GSH VORTAC. Thence....
From over GSH VORTAC on GSH R-270 to MEGGZ, then on GSH R-270 to AWSUM, then on GSH R-270 and CGT R-087 to IROCK, then on CGT R-087 to HALIE INT, then on CGT R-087 to CGT VORTAC.
 Expect radar vectors to final approach course.

EC-3, 02 JAN 2020 to 30 JAN 2020

GOSHEN SEVEN ARRIVAL

CHICAGO, ILLINOIS