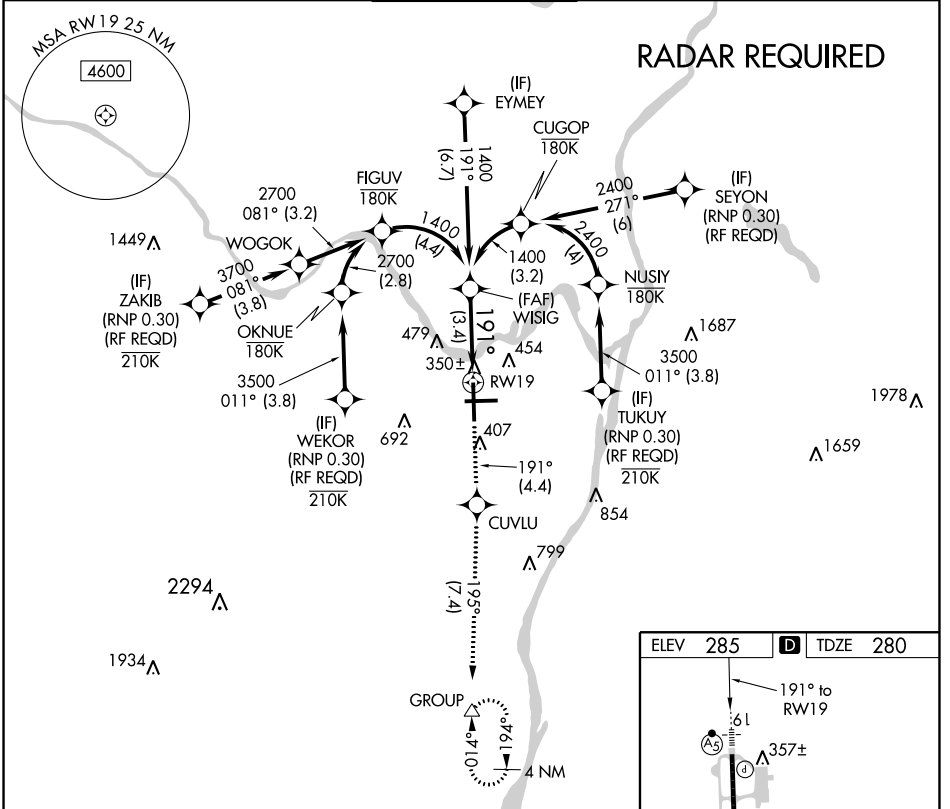


APP CRS	Rwy Idg	<b>8500</b>
<b>191°</b>	TDZE	<b>280</b>
	Apt Elev	<b>285</b>

# RNAV (RNP) Z RWY 19

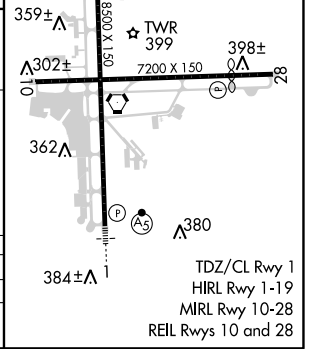
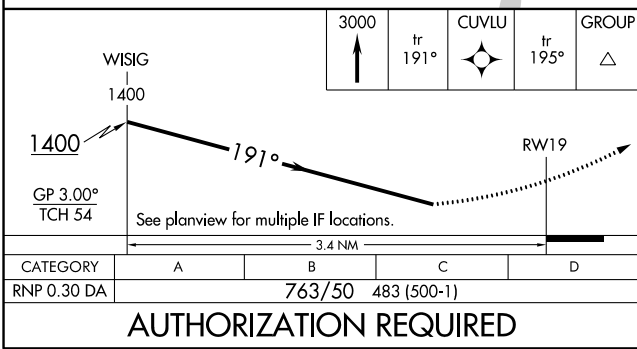
ALBANY INTL (ALB)

RNP AR APCH.		MALSR	MISSED APPROACH: Climb to 3000 on track 191° to CUVLU and on track 195° to GROUP and hold.	
▼ For uncompensated Baro-VNAV systems, procedure NA below -15°C or above 47°C. For inop ALS increase RNP 0.30 visibility to 1%.				
D-ATIS	ALBANY APP CON	ALBANY TOWER	GND CON	CLNC DEL
<b>120.45</b>	<b>132.825 307.2</b>	<b>119.5 257.8</b>	<b>121.7 348.6</b>	<b>127.50</b>



NE-2, 02 JAN 2020 to 30 JAN 2020

NE-2, 02 JAN 2020 to 30 JAN 2020



TDZ/CL Rwy 1  
HIRL Rwy 1-19  
MIRL Rwy 10-28  
REIL Rwy 10 and 28