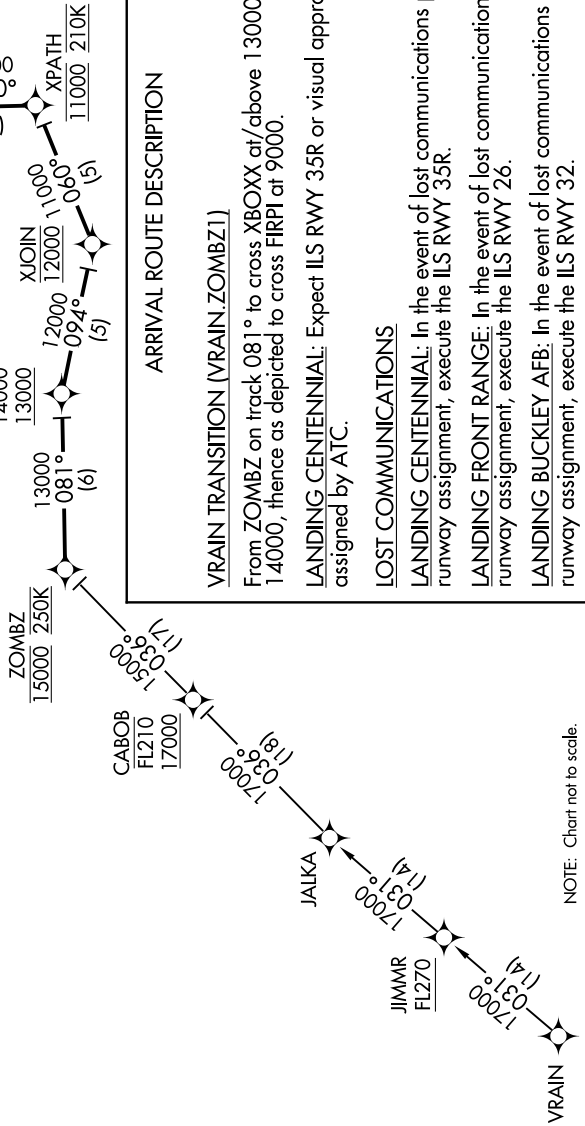


SW-1, '05 DEC 2019 to 02 JAN 2020

- CENTENNIAL ATIS 120.3
- FRONT RANGE ATIS 119.025
- BUCKLEY AFB ATIS 119.675 259.3
- DENVER APP CON 132.75 269.3 (APA)
- 128.25 371.95 (FTG)
- 128.45 251.075 (BKF)

- NOTE: RADAR required.
- NOTE: RNAV-1.
- NOTE: Turbojets only.
- NOTE: Expect runway assignment on initial contact with Denver TRACON.
- NOTE: DME/DME/IRU or GPS required.
- NOTE: Landing Centennial Rwy 17L/R.
- NOTE: Expect RADAR vectors to final approach course.
- NOTE: Landing Front Range or Buckley AFB.
- NOTE: Expect RADAR vectors to final approach course.



ARRIVAL ROUTE DESCRIPTION

VRAIN TRANSITION (VRAIN.ZOMBZ1)

From ZOMBZ on track 081° to cross XBOXX at/above 13000 and at/below 14000, thence as depicted to cross FIRPI at 9000.

LANDING CENTENNIAL: Expect ILS RWY 35R or visual approach as assigned by ATC.

LOST COMMUNICATIONS

- LANDING CENTENNIAL: In the event of lost communications prior to runway assignment, execute the ILS RWY 35R.
- LANDING FRONT RANGE: In the event of lost communications prior to runway assignment, execute the ILS RWY 26.
- LANDING BUCKLEY AFB: In the event of lost communications prior to runway assignment, execute the ILS RWY 32.

NOTE: Chart not to scale.

SW-1, '05 DEC 2019 to 02 JAN 2020