

WAAS CH 45923 W18A	APP CRS 185°	Rwy Idg 5956 TDZE 49 Apt Elev 55
--	------------------------	---

RNAV (GPS) RWY 18

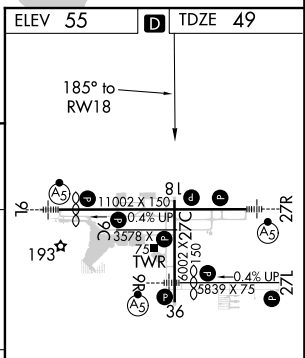
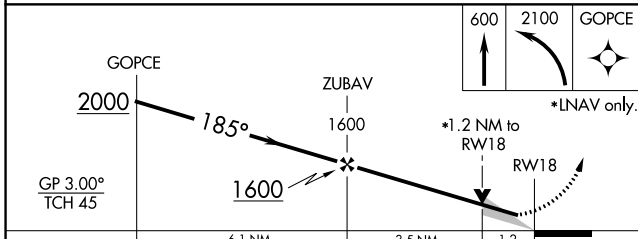
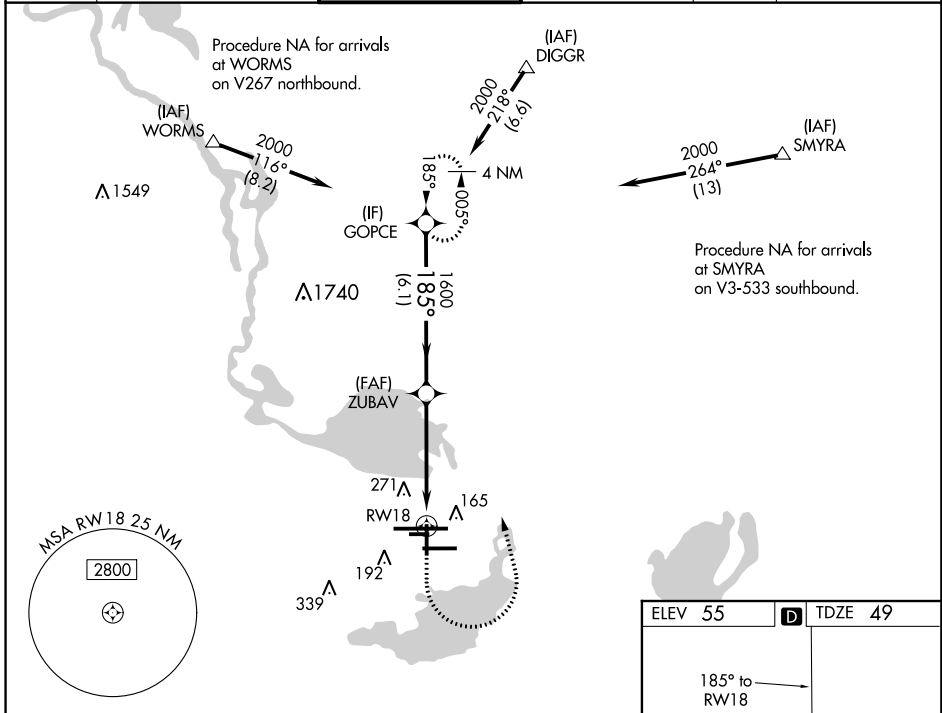
ORLANDO SANFORD INTL (SFB)

Night Landing: Rwy 27C NA. Baro-VNAV NA when using Executive altimeter setting. For uncompensated Baro-VNAV systems, LNAV/VNAV NA below -15°C (5°F) or above 43°C (109°F). DME/DME RNP-0.3 NA. VDP NA with Executive altimeter setting.

MISSED APPROACH: Climb to 600 then climbing left turn to 2100 direct GOPCE and hold.

When local altimeter setting not received, use Executive altimeter setting and increase all DA 43 feet and all MDA 60 feet, increase LNAV/VNAV all Cats visibility ¼ mile, and LNAV Cat C and D visibility ½ mile.

ATIS 125.975	ORLANDO APP CON 135.3 351.9 (NORTH) 119.775 351.9 (SOUTH)	SANFORD TOWER* 120.3(CTAF) 0 254.35	GND CON 121.35 254.35	CLNC DEL 123.975	ORLANDO CLNC DEL 121.35 (when twr closed)
------------------------	---	---	---------------------------------	----------------------------	--



CATEGORY	A	B	C	D
LPV DA		249-¾	200 (200-¾)	
LNAV/VNAV DA		299-¾	250 (300-¾)	
LNAV MDA	480-1	431 (500-1)	480-1¼	431 (500-1¼)
CIRCLING	580-1	525 (600-1)	525 (600-1½)	620-2 565 (600-2)

MIRL Rwy 18-36
MIRL Rwy 9C-27C
HIRL Rwy 9L-27R and 9R-27L
REIL Rwy 9C, 18, 27L and 36

SE-3, 05 DEC 2019 to 02 JAN 2020

SE-3, 05 DEC 2019 to 02 JAN 2020