


LOC/DME I-ADS 110.1 Chan 38	APP CRS 155°	Rwy Idg 6224 TDZE 643 Apt Elev 644
---	------------------------	---

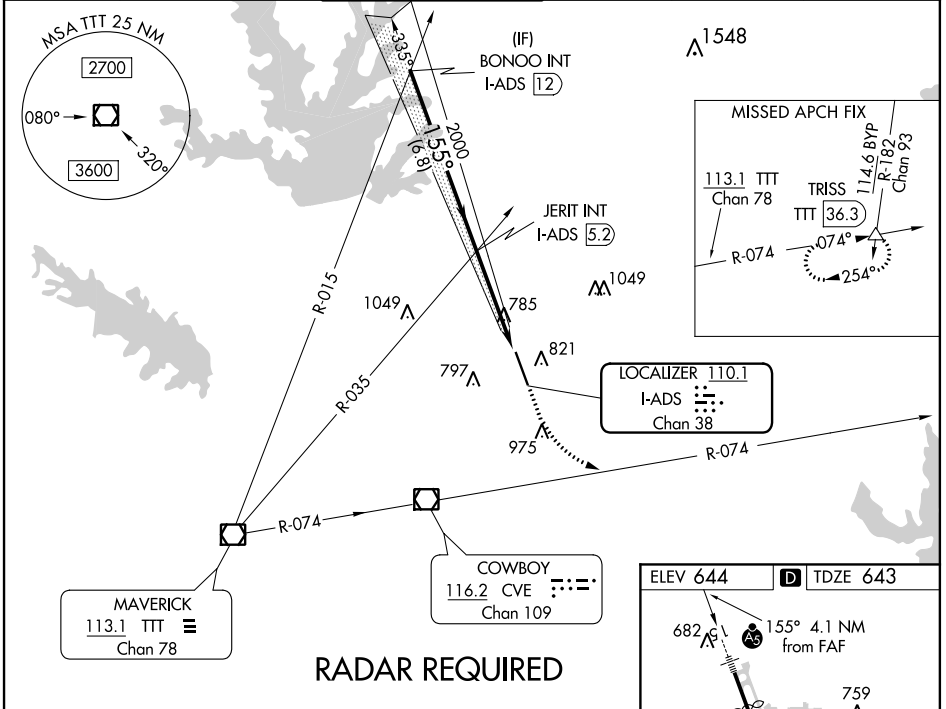
ILS or LOC RWY 15

ADDISON (ADS)

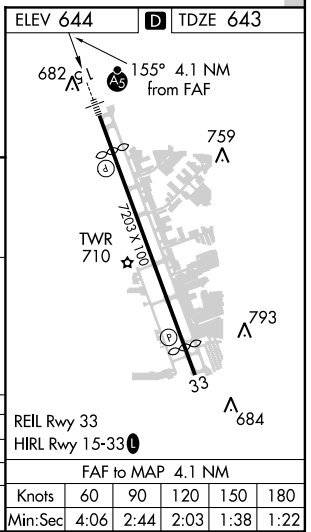
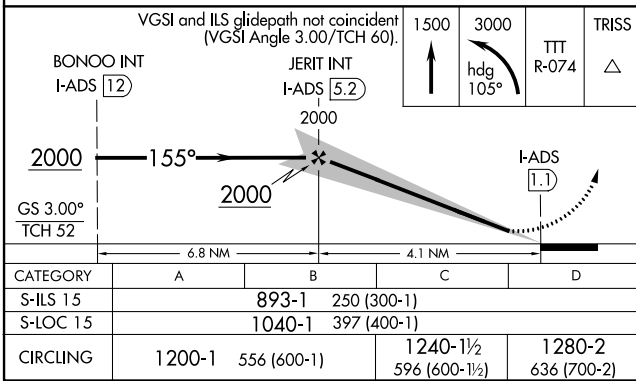
MALSR
 MISSED APPROACH: Climb to 1500 then climbing left turn to 3000 via heading 105° and TTT VOR/DME R-074 to TRISS Int/TTT 36.3 DME and hold.

When local altimeter setting not received, use Dallas-Love Field altimeter setting and increase all DA 39 feet and MDA 40 feet, increase Circling Cat C/D visibility 1/4 mile. Inoperative table does not apply to S-ILS 15 all Cats, S-LOC 15 Cats A, B & C. For inoperative MALSR, increase S-LOC 15 Cat D visibility to 1 1/4. Helicopter visibility reduction below 1 SM NA. For inop MALSR when using Dallas-Love Field altimeter setting increase S-LOC Cat C visibility to 1/4 and Cat D visibility to 1 1/2.

ATIS 133.4	REGIONAL APP CON 124.3 282.275	ADDISON TOWER* 126.0 (CTAF) 239.0	GND CON 121.6	CLNC DEL 119.55	UNICOM 122.95
----------------------	--	---	-------------------------	---------------------------	-------------------------



RADAR REQUIRED



SC-2. 05 DEC 2019 to 02 JAN 2020

SC-2. 05 DEC 2019 to 02 JAN 2020