

(MAD.DPK3) 19003

AL-460 (FAA)

# DEER PARK THREE ARRIVAL

WINDSOR LOCKS, CONNECTICUT

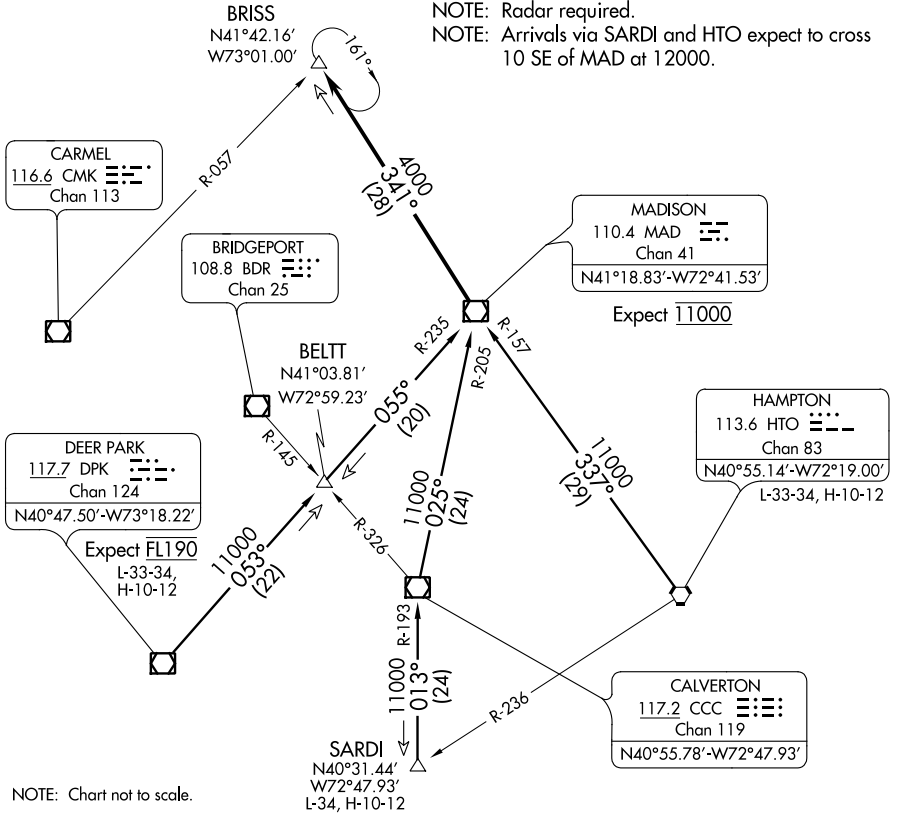
BRADLEY INTL D-ATIS  
 118.15  
 YANKEE APP CON  
 123.95 290.55 (061-240)  
 125.35 281.5 (241-060)

WESTFIELD-BARNES  
 RGNL

WESTOVER ARB/  
 METROPOLITAN

BRADLEY  
 INTL

NOTE: Applicable to arrivals 11000 and above.  
 NOTE: Radar required.  
 NOTE: Arrivals via SARDI and HTO expect to cross  
 10 SE of MAD at 12000.



NOTE: Chart not to scale.

## ARRIVAL ROUTE DESCRIPTION

**DEER PARK TRANSITION (DPK.DPK3):** From over DPK VOR/DME on DPK R-053 to BELTT INT, then on MAD R-235 to MAD VOR/DME. Thence . . .

**HAMPTON TRANSITION (HTO.DPK3):** From over HTO VORTAC on HTO R-337 and MAD R-157 to MAD VOR/DME. Thence . . .

**SARDI TRANSITION (SARDI.DPK3):** From over SARDI INT on CCC R-193 to CCC VOR/DME, then on CCC R-025 and MAD R-205 to MAD VOR/DME. Thence . . .

From over MAD VOR/DME on MAD R-341 to BRISS INT/MAD 28 DME.  
 Expect radar vectors to final approach course prior to BRISS INT.

# DEER PARK THREE ARRIVAL

WINDSOR LOCKS, CONNECTICUT

(MAD.DPK3) 25OCT07

NE-1, 05 DEC 2019 to 02 JAN 2020

NE-1, 05 DEC 2019 to 02 JAN 2020