


RNAV (RNP) Z RWY 34L

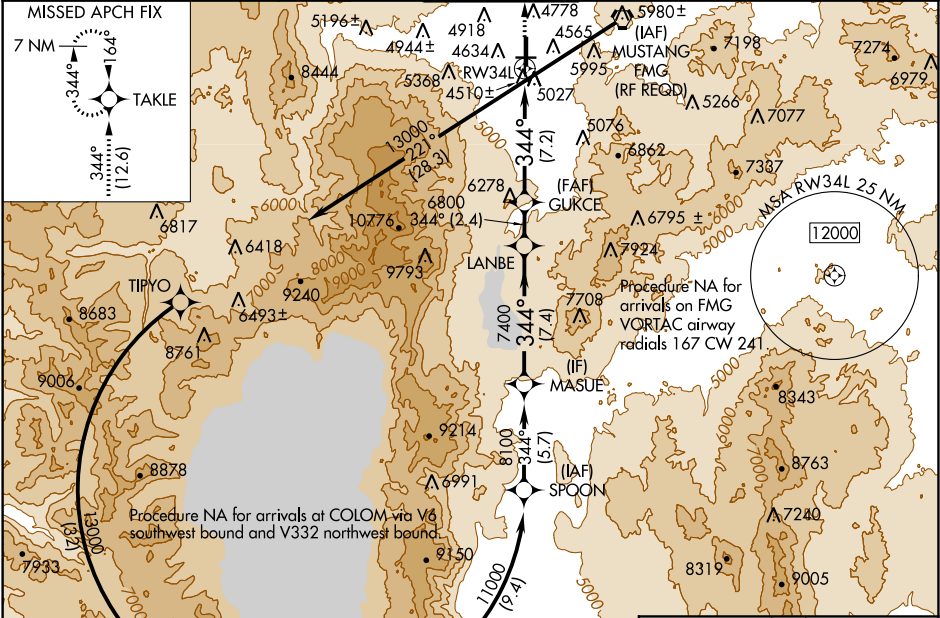
RENO/TAHOE INTL (RNO)

APP CRS	Rwy Idg	10002
344°	TDZE	4410
	Apt Elev	4415

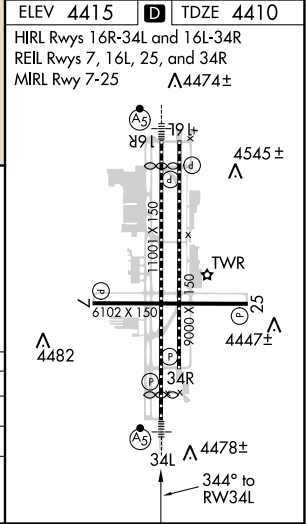
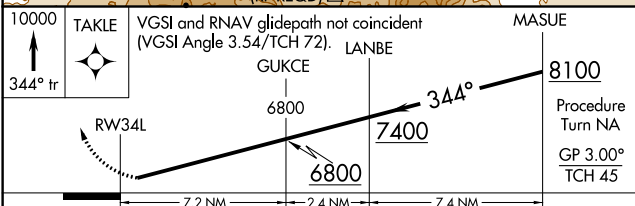
GPS required. For uncompensated Baro-VNAV systems, procedure NA below -13°C (8°F) or above 40°C (104°F). For inoperative MALSR increase visibility RNP 0.12 to 1¼ mile and RNP 0.30 to 4 miles.
 *Missed approach requires minimum climb of 243 feet per NM to 7200.

MALSR

MISSED APPROACH: Climb to 10000 via 344° track to TAKLE and hold, continue climb-in-hold to 10000.

D-ATIS	NORCAL APP CON	RENO TOWER	GND CON	CLNC DEL	CPDLC
135.8 363.0	119.2 279.55 126.3 353.9	118.7 257.8	121.9 348.6	124.9 370.85	



ELEV 4415	D TDZE 4410
HIRL Rwy 16R-34L and 16L-34R	
REIL Rwy 7, 16L, 25, and 34R	
MIRL Rwy 7-25 Δ 4474±	



CATEGORY	A	B	C	D
RNP 0.12 DA*	4771-1 361 (400-1)			
RNP 0.30 DA	5342-2¾ 932 (1000-2¾)			

AUTHORIZATION REQUIRED

SW-4, 05 DEC 2019 to 02 JAN 2020

SW-4, 05 DEC 2019 to 02 JAN 2020