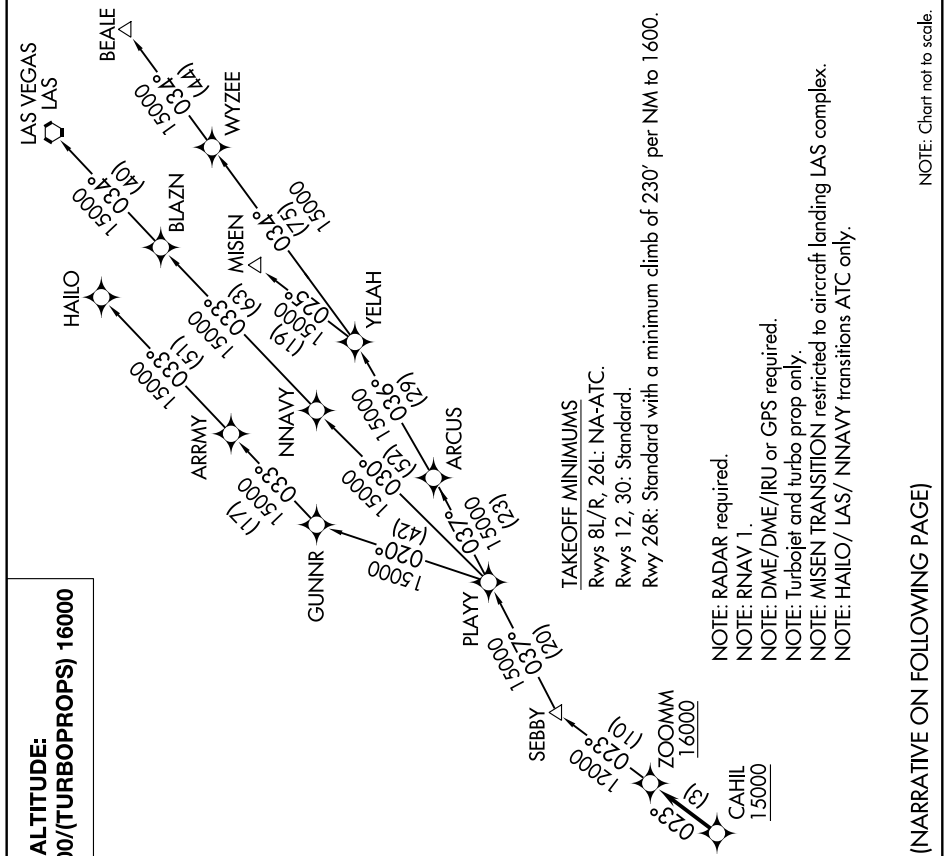
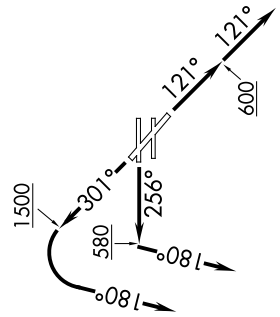
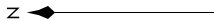


SW-3, 05 DEC 2019 to 02 JAN 2020

**TOP ALTITUDE:
(TURBOJETS) 17000/(TURBOPROPS) 16000**

ATIS 127.5
CLNC DEL
118.15
GND CON
133.0 257.6
SOCAL DEP CON
125.35 316.125 (Rwy 12)
127.2 269.6 (Rwys 26R, 30)



NOTE: Chart not to scale.

(NARRATIVE ON FOLLOWING PAGE)

SW-3, 05 DEC 2019 to 02 JAN 2020