

APP CRS	Rwy Idg	<b>8650</b>
<b>121°</b>	TDZE	<b>53</b>
	Apt Elev	<b>60</b>

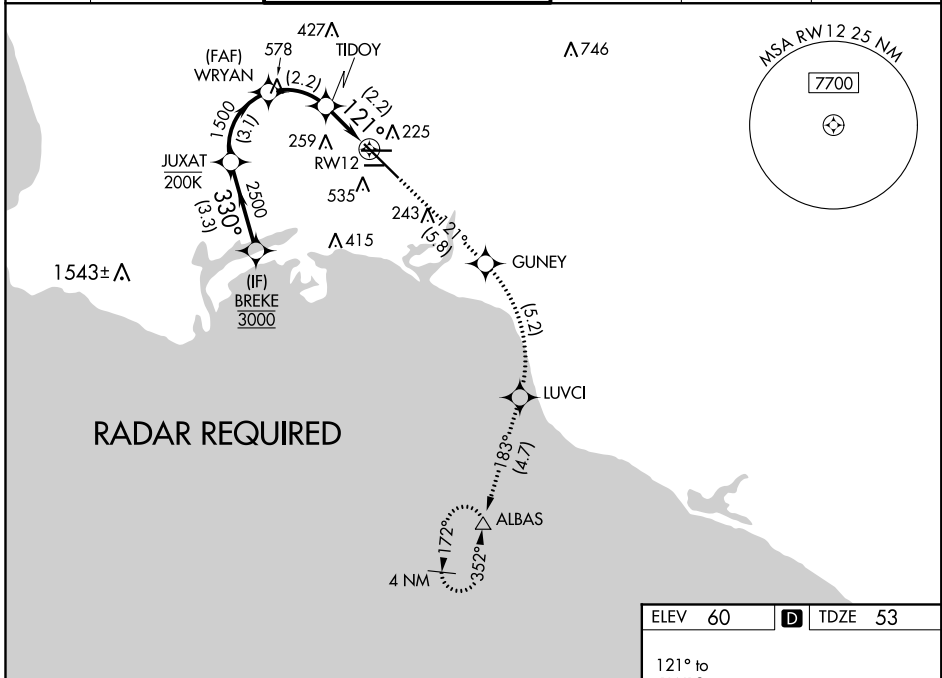
# RNAV (RNP) RWY 12

LONG BEACH/DAUGHERTY FIELD (LGB)

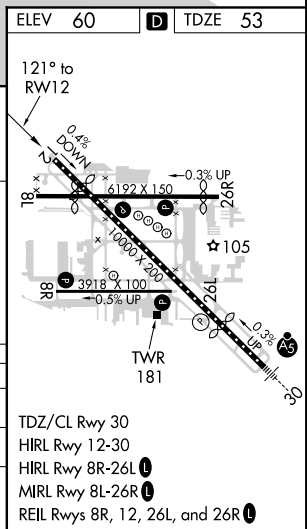
**▽**  
**▲** For uncompensated Baro-VNAV systems, procedure NA below 4°C (40°F) or above 54°C (130°F).  
RF required. GPS required.

MISSED APPROACH: Climb to 3000 on track 121° to GUNEY, right turn to LUVCI, and on track 183° to ALBAS and hold.

ATIS <b>127.75</b>	SOCAL APP CON <b>125.35 316.125</b>	LONG BEACH TOWER* <b>120.5 257.6</b> (Rwy 12) <b>119.4</b> (CTAF) <b>0 257.6</b> (Rwy 30)	GND CON <b>133.0 257.6</b>	CLNC DEL <b>118.15</b>	UNICOM <b>122.95</b>
-----------------------	--	---	-------------------------------	---------------------------	-------------------------



	BREKE	JUXAT	WRYAN	TIDOY	RWY 12	ALBAS
	3000	2500	1500	794		
	GP 3.00°				tr 121°	tr 183°
	TCH 47					
	3.3 NM	3.1 NM	2.2 NM	2.2 NM		
CATEGORY	A	B	C	D		
RNP 0.15 DA		414-1¼	361 (400-1¼)			
RNP 0.30 DA		485-1½	432 (500-1½)			
<b>AUTHORIZATION REQUIRED</b>						



SW-3, 05 DEC 2019 to 02 JAN 2020

SW-3, 05 DEC 2019 to 02 JAN 2020