

WAAS CH <b>97337</b> <b>W23A</b>	APP CRS <b>234°</b>	Rwy Idg TDZE Apt Elev	<b>8000</b> <b>126</b> <b>130</b>
--	------------------------	-----------------------------	---

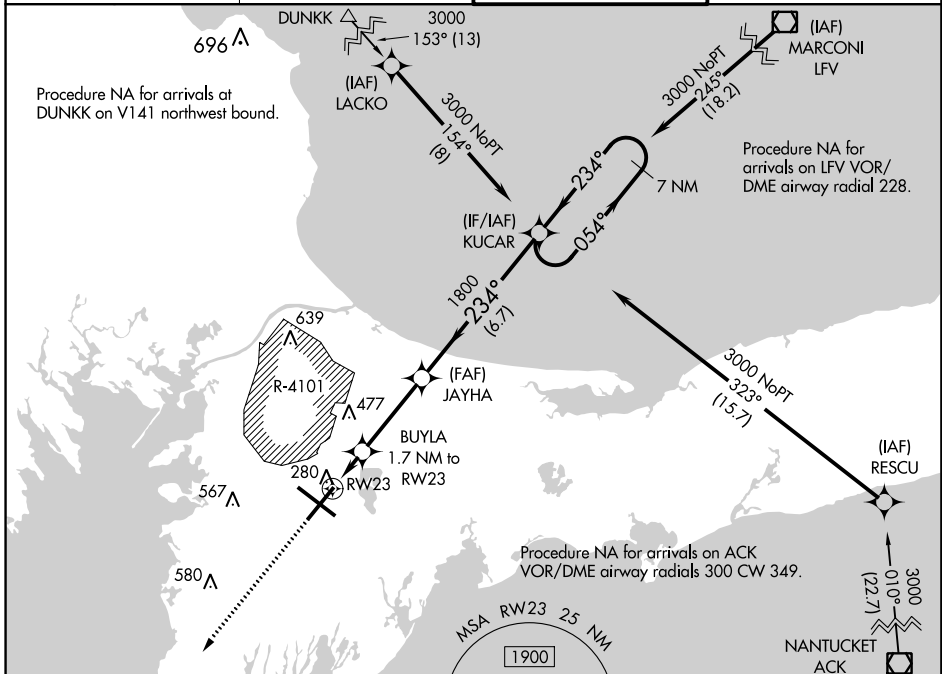
# RNAV (GPS) RWY 23

CAPE COD COAST GUARD AIR STATION (F/MH)

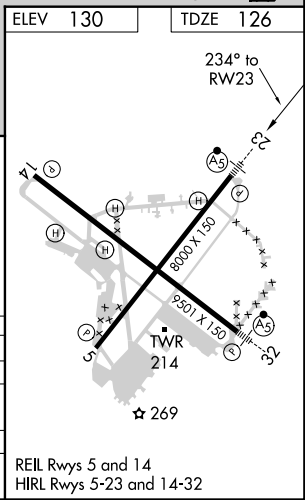
**▲** For uncompensated Baro-VNAV systems, LNAV/VNAV NA below -15°C (5°F) or above 54°C (130°F).  
DME/DME RNP-0.3 NA. Circling NA NE of Rwy 14 and NW of Rwy 23. For inoperative MALSR, increase LNAV/VNAV all Cats visibility to RVR 4500 and LNAV Cats C and D visibility to RVR 6000.

**MISSED APPROACH:** Climb to 3000 direct GLESO and hold.

ATIS <b>120.475 236.825</b>	BOSTON APP CON ★ <b>118.2 284.6</b>	COAST GUARD TOWER <b>128.425 291.1</b>	GND CON <b>124.15 275.8</b>
--------------------------------	--	---	--------------------------------



ELEV 130	TDZE 126			
3000	GLESO *LNAV only.	KUCAR 7 NM Holding Pattern		
		GP 3.00° TCH 54		
CATEGORY	A	B	C	D
LPV DA	326/24 200 (200-½)			
LNAV/VNAV DA	441/26 315 (400-½)			
LNAV MDA	540/24 414 (500-½)	540/40 414 (500-¾)		
CIRCLING	580-1 450 (500-1)	640-1 510 (600-1)	900-2¼ 770 (800-2¼)	900-2½ 770 (800-2½)



NE-1, 07 NOV 2019 to 05 DEC 2019

NE-1, 07 NOV 2019 to 05 DEC 2019