

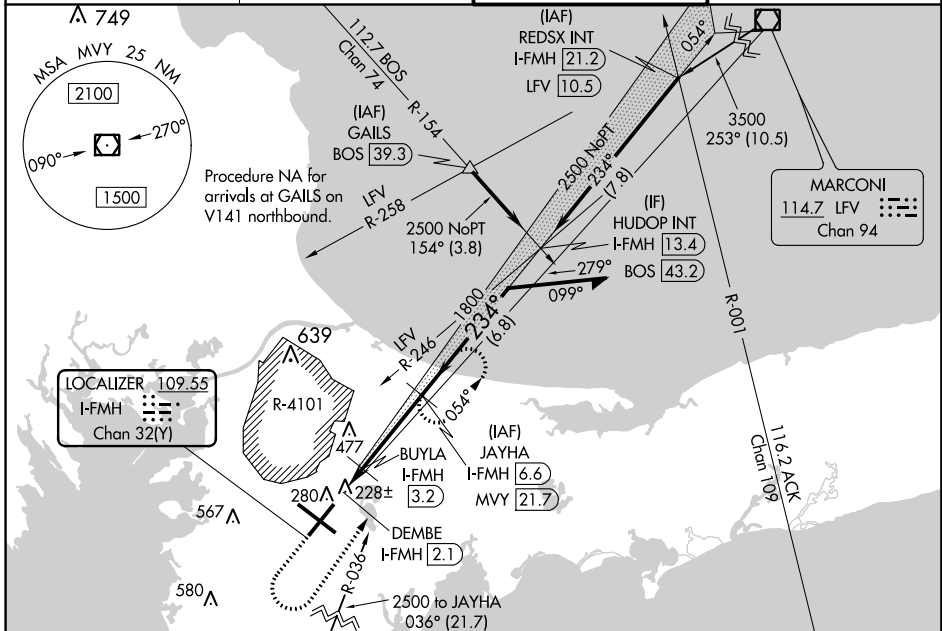
LOC/DME I-FMH 109.55 Chan 32(Y)	APP CRS 234°	Rwy Idg TDZE 126 Apt Elev 130	8000
-----------------------------------------------------	------------------------	---------------------------------------------------	-------------

COPTER ILS Y or LOC Y RWY 23

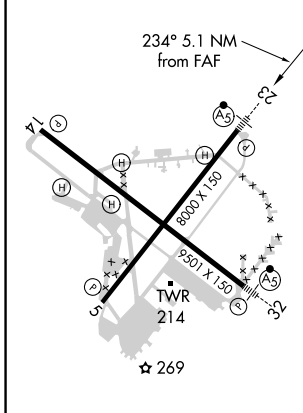
CAPE COD COAST GUARD AIR STATION (FMH)

DME required.	MALSR 	MISSED APPROACH: Climb to 1400 then climbing left turn heading 050° and MVY VOR/DME R-036 to 3000 direct JAYHA and hold.
For inop ALS increase, H-ILS 23 and H-LOC 23 visibility to RVR 2400. United States Coast Guard only.		

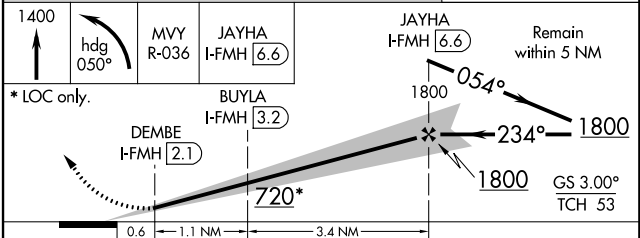
ATIS 120.475 236.825	BOSTON APP CON ★ 118.2 284.6	COAST GUARD TOWER 128.425 291.1	GND CON 124.15 275.8
--------------------------------	----------------------------------------	-------------------------------------------	--------------------------------



ELEV 130	TDZE 126
----------	----------



NOT FOR CIVIL USE



CATEGORY	COPTER	
H-ILS 23	226/12	100 (100-¼)
H-LOC 23	480/12	354 (400-¼)

NE-1, 07 NOV 2019 to 05 DEC 2019

NE-1, 07 NOV 2019 to 05 DEC 2019