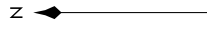


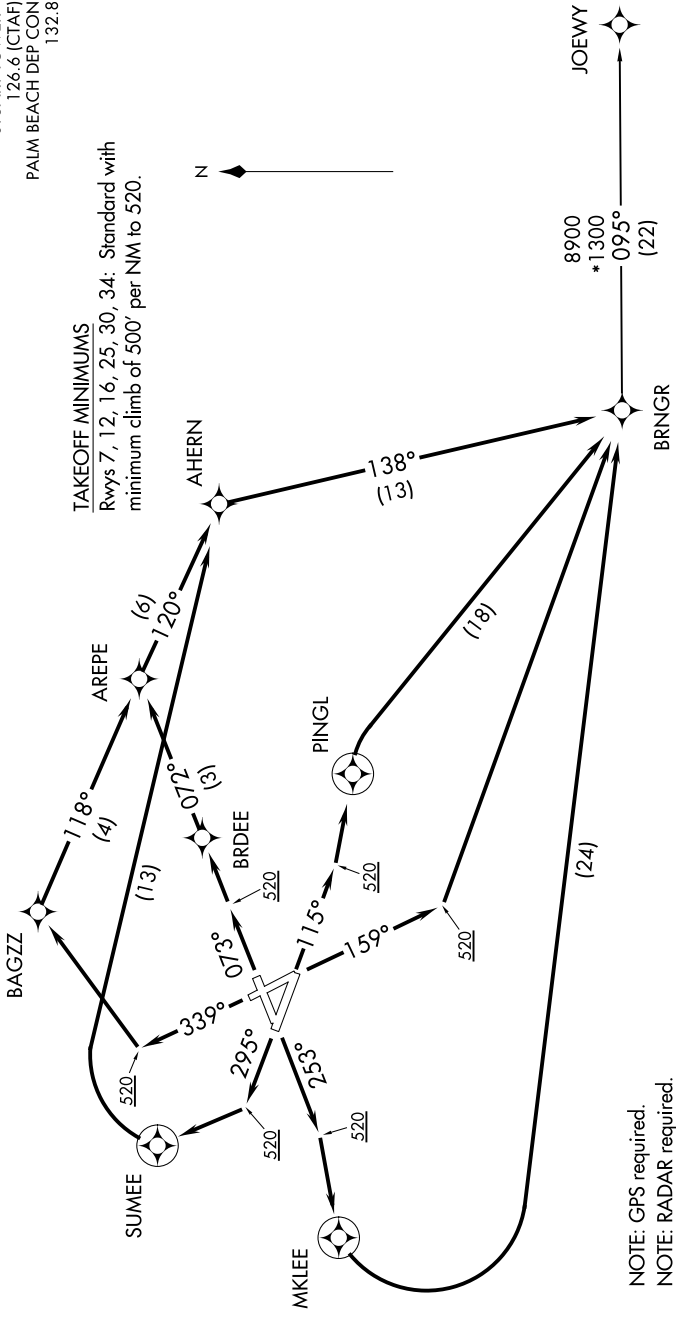
# BRNGR TWO DEPARTURE (RNAV)

ATIS  
134.475  
GND CON  
121.7  
STUART TOWER\*  
126.6 (CTAF)  
PALM BEACH DEP CON  
132.8

TAKEOFF MINIMUMS  
Rvys 7, 12, 16, 25, 30, 34: Standard with  
minimum climb of 500' per NM to 520.



**TOP ALTITUDE:  
3000**



NOTE: GPS required.  
NOTE: RADAR required.  
NOTE: RNAV 1.  
NOTE: For turbojet/turboprop aircraft only.  
NOTE: Transponder code will be issued via SUA ground control or PBI APP CON when tower closed.

(NARRATIVE CONTINUED ON FOLLOWING PAGE)

NOTE: Chart not to scale.

# BRNGR TWO DEPARTURE (RNAV)