

VOR/DME SJC 114.1 Chan 88	APP CRS 286°	Rwy Idg 2443 TDZE 7 Apt Elev 7
---	------------------------	---

VOR RWY 31

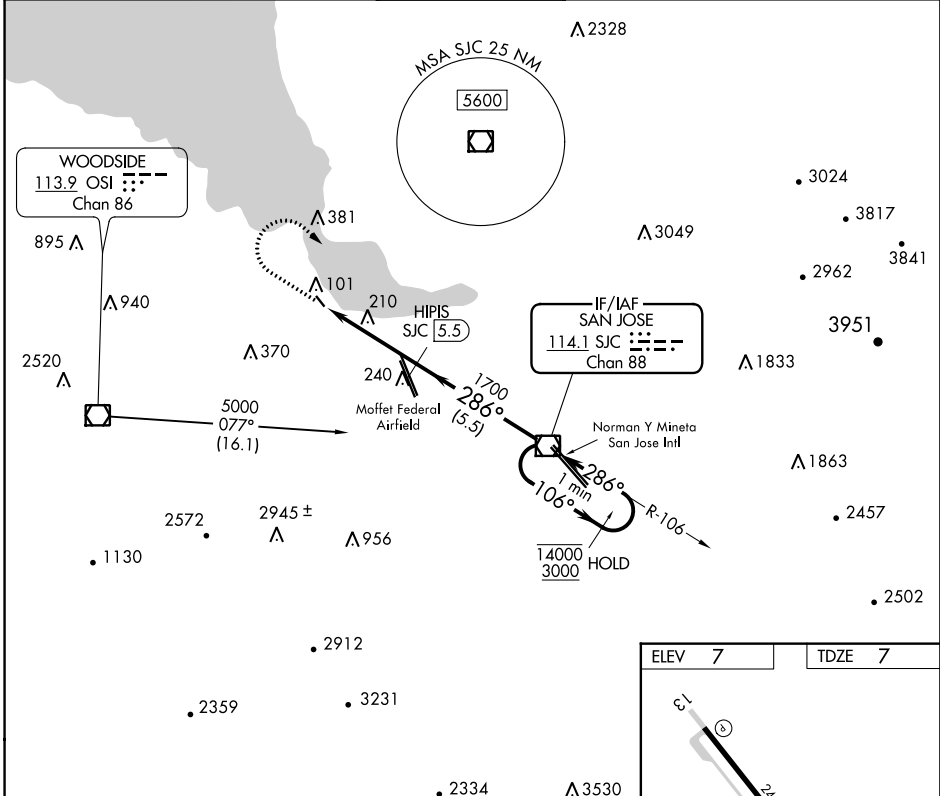
PALO ALTO (PAO)

DME Required

⚠ Circling NA southwest of Rwy 13-31. Rwy 31 helicopter visibility reduction below 1 SM NA. When control tower closed, use Norman Y Mineta San Jose Intl altimeter setting and increase all MDAs 40 feet. Procedure NA at night.

MISSED APPROACH: Climb to 1000 then climbing right turn to 3000 direct SJC VOR/DME and hold.

ATIS 135.275	NORCAL APP CON 121.3 270.35	PALO ALTO TOWER* 118.6 (CTAF)	GND CON 125.0	UNICOM 122.95
------------------------	---------------------------------------	--	-------------------------	-------------------------



SW-2. 07 NOV 2019 to 05 DEC 2019

SW-2. 07 NOV 2019 to 05 DEC 2019

1000	3000	SJC	
↑	↷	☐	
		SJC VOR/DME	One Minute Holding Pattern
CATEGORY	A	B	C
S-31	480-1	473 (500-1)	NA
CIRCLING	480-1	520-1	NA
	473 (500-1)	513 (600-1)	

