

(YOTES6.YOTES) 18144

# YOTES SIX DEPARTURE (RNAV)

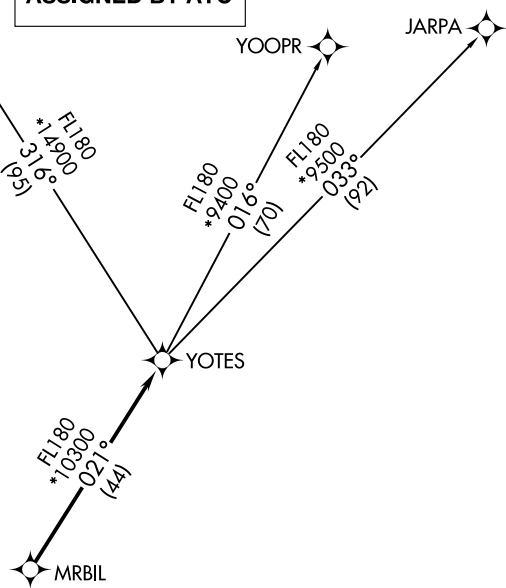
AL-6915 (FAA)

GLENDALE MUNI (G<sup>E</sup>U)  
GLENDALE, ARIZONA

ATIS  
119.425  
GND CON  
118.0  
GLENDALE TOWER \*  
121.0  
LUKE DEP CON \*  
118.15 363.125  
PHOENIX DEP CON  
120.7 239.0

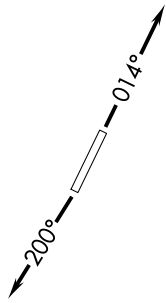
GRAND CANYON GCN

**TOP ALTITUDE:  
ASSIGNED BY ATC**



SW-4, 07 NOV 2019 to 05 DEC 2019

SW-4, 07 NOV 2019 to 05 DEC 2019



- NOTE: RNAV 1.
- NOTE: Turbojets and turboprops only.
- NOTE: RADAR required.
- NOTE: GPS required.
- NOTE: GCN TRANSITION ATC assigned only.
- NOTE: Aircraft departing KGEU and KGYR ATC assigned only.

TAKEOFF MINIMUMS  
Rwys 1, 19: Standard.

NOTE: Chart not to scale.



## DEPARTURE ROUTE DESCRIPTION

TAKEOFF RUNWAY 1: Climb heading 014° or as assigned by ATC, thence. . .

TAKEOFF RUNWAY 19: Climb heading 200° or as assigned by ATC, thence. . .

. . . expect RADAR vectors to MRBIL, then on track 021° to YOTES, then on (transition).  
Maintain ATC assigned altitude, expect filed altitude 3 minutes after departure.

GRAND CANYON TRANSITION (YOTES6.GCN)

JARPA TRANSITION (YOTES6.JARPA)

YOOPR TRANSITION (YOTES6.YOOPR)

# YOTES SIX DEPARTURE (RNAV)

(YOTES6.YOTES) 24MAY18

GLENDALE, ARIZONA  
GLENDALE MUNI (G<sup>E</sup>U)