

APP CRS <b>354°</b>	Rwy Idg <b>4289</b>
	TDZE <b>2105</b>
	Apt Elev <b>2121</b>

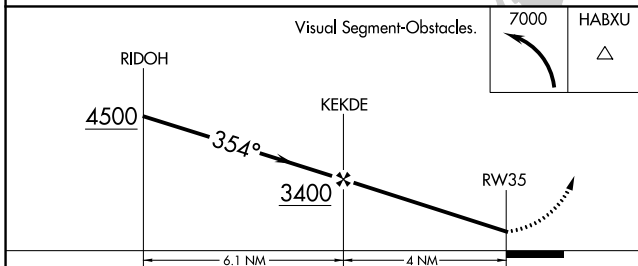
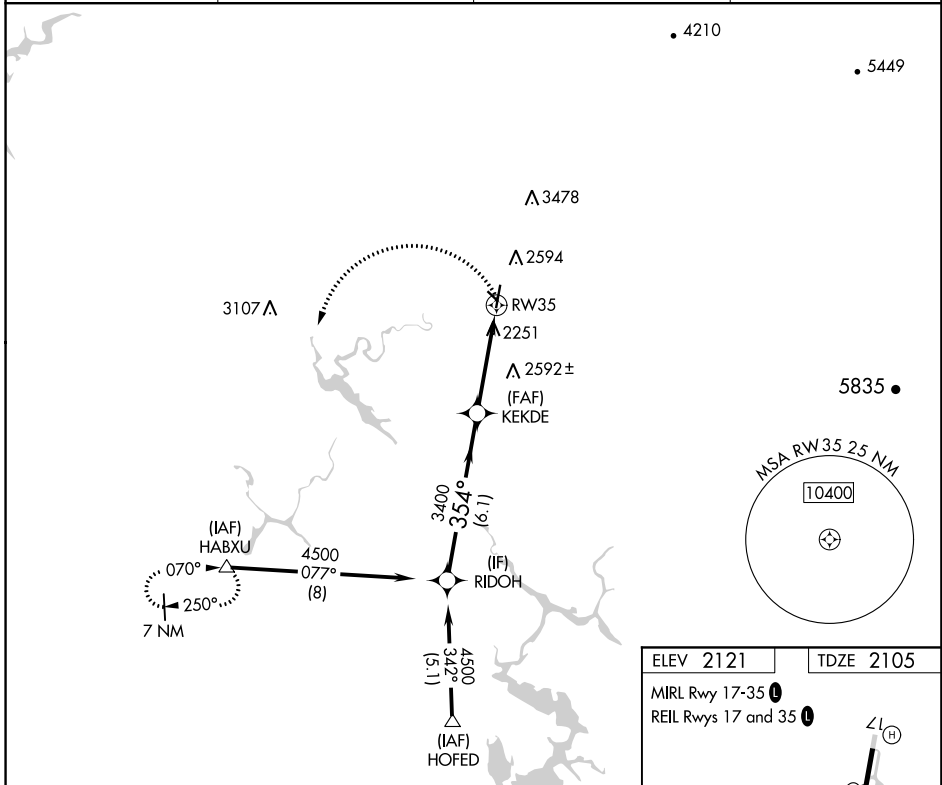
# RNAV (GPS) RWY 35

COLUMBIA (O22)

**⚠** Circling NA east of Rwy 17-35. Rwy 17/35 helicopter visibility reduction below 1 SM NA. DME/DME RNP-0.3 NA. Procedure NA at night.

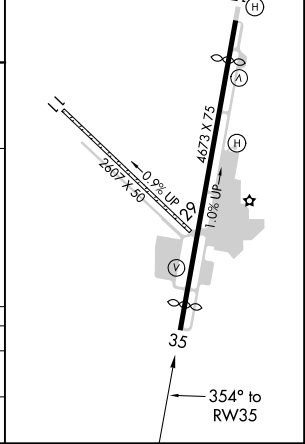
**⚠** MISSED APPROACH: Climbing left turn to 7000 direct HABXU and hold, continue climb-in-hold to 7000.

AWOS-3 <b>124.65</b>	NORCAL APP CON <b>125.1 363.2 (NORTH/WEST)</b>	OAKLAND CENTER <b>121.25 327.0 (EAST/SOUTH)</b>	UNICOM <b>122.975 (CTAF) 0</b>
-------------------------	---	--	-----------------------------------



ELEV 2121	TDZE 2105
-----------	-----------

MIRL Rwy 17-35 **0**  
REIL Rwys 17 and 35 **0**



CATEGORY	A	B	C	D
LNVA MDA	3140-1¼ 1035 (1100-1¼)	3140-1½ 1035 (1100-1½)	3140-3 1035 (1100-3)	NA
<b>C</b> CIRCLING	3140-1¼ 1019 (1100-1¼)	3140-1½ 1019 (1100-1½)	3140-3 1019 (1100-3)	NA

SW-2. 07 NOV 2019 to 05 DEC 2019

SW-2. 07 NOV 2019 to 05 DEC 2019