

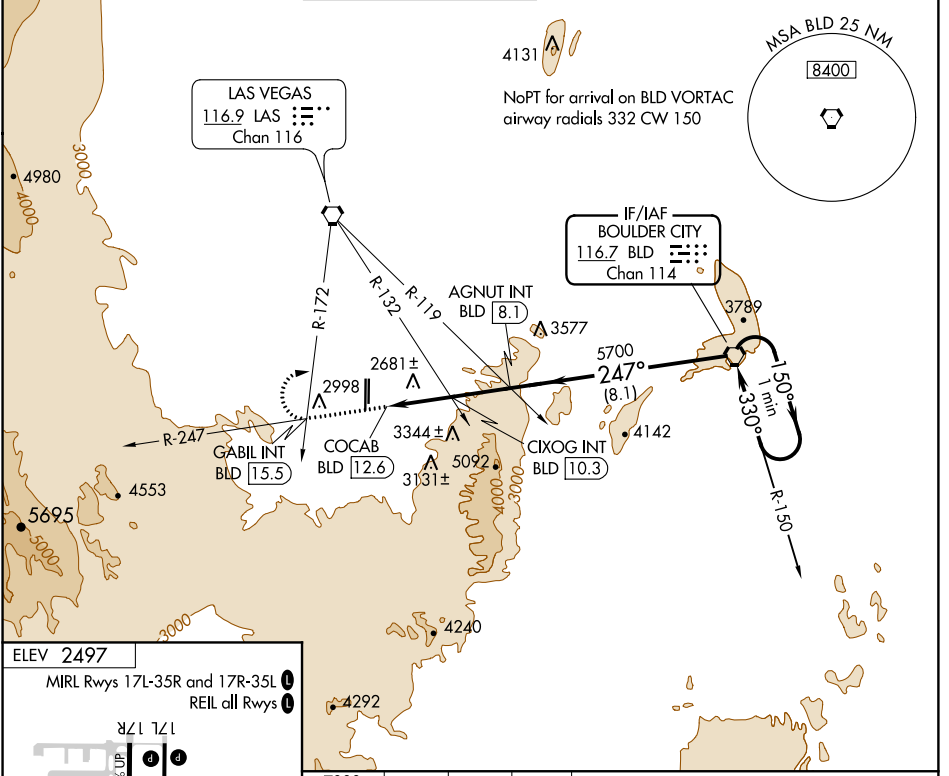
VORTAC BLD 116.7 Chan 114	APP CRS 247°	Rwy Idg TDZE Apt Elev N/A N/A 2497
---	------------------------	--

VOR-C
HENDERSON EXECUTIVE (HND)

⚠ Circling to Rwy 35L NA at night.
If local altimeter setting not received, use McCarran Intl altimeter setting and increase all MDA's 60 feet.

MISSED APPROACH: Climb to 7000 on BLD VORTAC R-247 to GABIL INT/BLD 15.5 DME and right turn direct BLD VORTAC and hold.

ATIS 120.775	LAS VEGAS APP CON 118.4 307.25	HENDERSON TOWER* 125.1 (CTAF) 0	GND CON 127.8	LAS VEGAS CLNC DEL 125.9 (when tower closed)	UNICOM 122.95
------------------------	--	---	-------------------------	---	-------------------------



SW-4, 07 NOV 2019 to 05 DEC 2019

SW-4, 07 NOV 2019 to 05 DEC 2019

ELEV 2497

MIRL Rwy's 17L-35R and 17R-35L
REIL all Rwy's

FAF to MAP 4.5 NM

Knots	60	90	120	150	180
Min:Sec	4:30	3:00	2:15	1:48	1:30

7000	GABIL INT	BLD	*4960 when using McCarran Intl altimeter setting.	BLD VORTAC	One Minute Holding Pattern
------	-----------	-----	---	------------	----------------------------

CATEGORY	A	B	C	D
CIRCLING	4840-1¼ 2343 (2400-1¼)	4840-1½ 2343 (2400-1½)	4840-3 2343 (2400-3)	NA
CIXOG FIX MINIMUMS (DUAL VOR RECEIVERS OR DME REQUIRED)				
CIRCLING	3620-1¼ 1123 (1200-1¼)	3620-1½ 1123 (1200-1½)	3620-3 1123 (1200-3)	NA