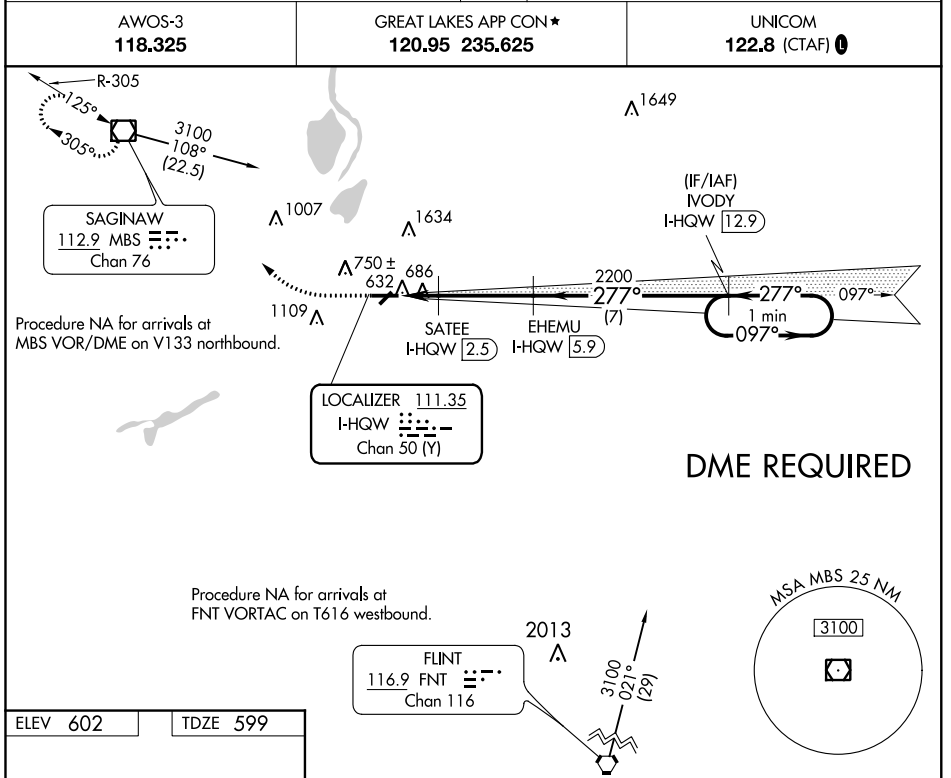


LOC/DME I-HQW 111.35 Chan 50 (Y)	APP CRS 277°	Rwy Idg 5002 TDZE 599 Apt Elev 602
--	------------------------	---

ILS or LOC RWY 28

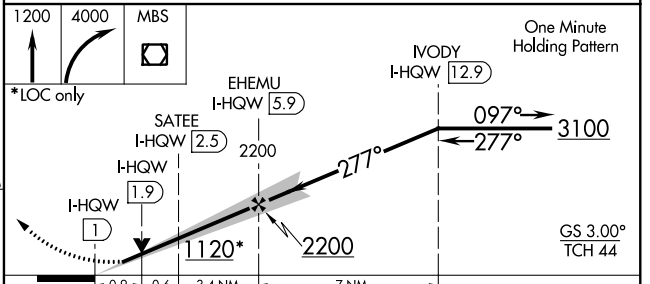
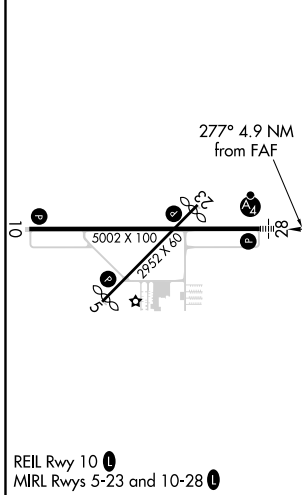
SAGINAW COUNTY H W BROWNE (HYX)

	Inoperative table does not apply to S-ILS 28. DME required. Circling Rwy 5, 23 NA at night. Circling NA for Cat C north of Rwy 10-28.		MISSED APPROACH: Climb to 1200 then climbing right turn to 4000 direct MBS VOR/DME and hold, continue climb-in-hold to 4000.



DME REQUIRED

ELEV 602	TDZE 599
-----------------	-----------------



CATEGORY	A	B	C	D
S-ILS 28		802- ³ / ₄	203 (200- ³ / ₄)	NA
S-LOC 28		940- ³ / ₄	341 (400- ³ / ₄)	NA
CIRCLING	1100-1	498 (500-1)	1460-2 ¹ / ₂ 858 (900-2 ¹ / ₂)	NA

EC-1, 07 NOV 2019 to 05 DEC 2019

EC-1, 07 NOV 2019 to 05 DEC 2019