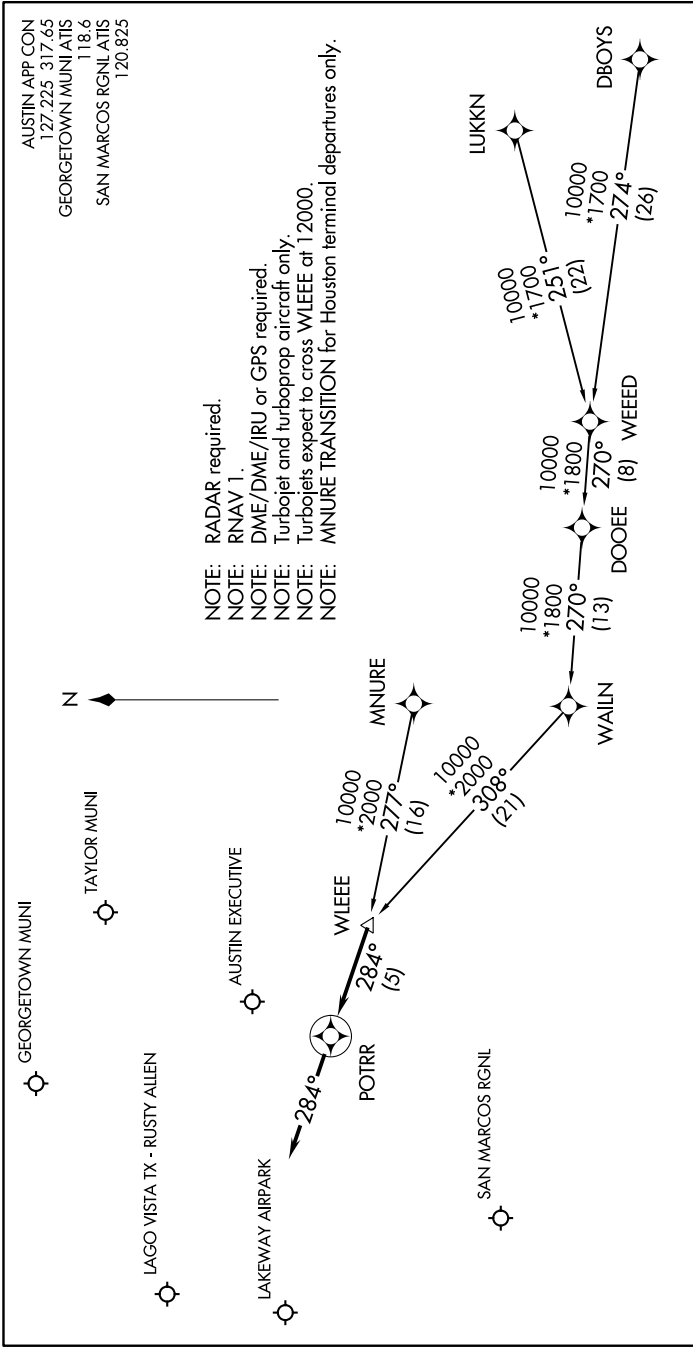


POTRR ONE ARRIVAL (RNAV)

AUSTIN, TEXAS

SC-3, 07 NOV 2019 to 05 DEC 2019



AUSTIN APP CON
127.225 317.65
GEORGETOWN MUNI ATIS
118.6
SAN MARCOS RGNL ATIS
120.825

- NOTE: RADAR required.
- NOTE: RNAV 1.
- NOTE: DME/DME/IRU or GPS required.
- NOTE: Turbojet and turboprop aircraft only.
- NOTE: Turbojets expect to cross WLEEE at 12000.
- NOTE: MNJURE TRANSITION for Houston terminal departures only.

ARRIVAL ROUTE DESCRIPTION

- DBOYS TRANSITION (DBOYS.POTRR1)
- LUKKN TRANSITION (LUKKN.POTRR1)
- MNJURE TRANSITION (MNJURE.POTRR1)
- WEED TRANSITION (WEED.POTRR1)

LANDING ALL AIRPORTS: From WLEEE on track 284° to POTRR, then on track 284°. Expect RADAR vectors to final approach course.

SC-3, 07 NOV 2019 to 05 DEC 2019

POTRR ONE ARRIVAL (RNAV)

AUSTIN, TEXAS