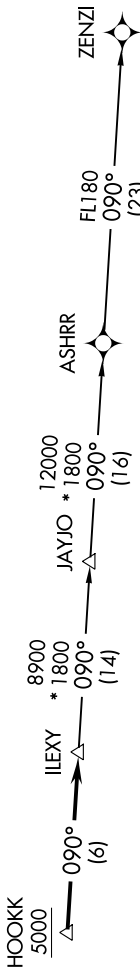
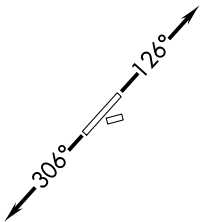


ILEXY TWO DEPARTURE (RNAV)

SC-3, 07 NOV 2019 to 05 DEC 2019

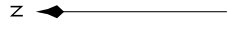
**TOP ALTITUDE:
ASSIGNED BY ATC**

AWOS-3
118.825
CLINC DEL
EXECUTIVE TOWER★
126.025 when tower closed
120.3 (CTAF)
AUSTIN DEP CON
127.225 317.65



- NOTE: RADAR required.
- NOTE: DME/DME/IRU or GPS required.
- NOTE: RNAV-1.
- NOTE: Houston terminal area arrivals expect routing from ILEXY.
- NOTE: JAYJO transition to join V306 only.

TAKEOFF MINIMUMS:
 Rwys 16, 34: NA-Environmental.
 Rwys 13, 31: Standard.



NOTE: Chart not to scale.

DEPARTURE ROUTE DESCRIPTION

TAKEOFF RWY 13: Climb heading 126° or as assigned by ATC for RADAR vectors to cross HOOKK at or above 5000, thence. . . .
TAKEOFF RWY 31: Climb heading 306° or as assigned by ATC for RADAR vectors to cross HOOKK at or above 5000, thence. . . .
 . . . on track 090° to ILEXY, then on transition. Maintain altitude assigned by ATC. Expect filed altitude 10 minutes after departure.

JAYJO TRANSITION (ILEXY2.JAYJO)
ZENZI TRANSITION (ILEXY2.ZENZI)

SC-3, 07 NOV 2019 to 05 DEC 2019