

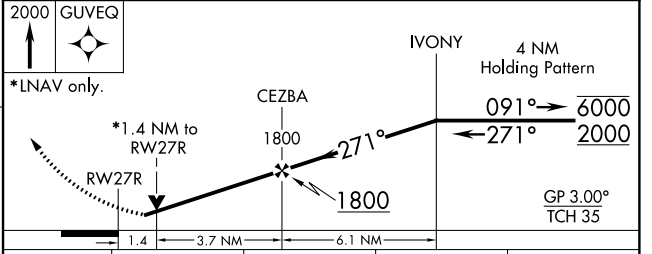
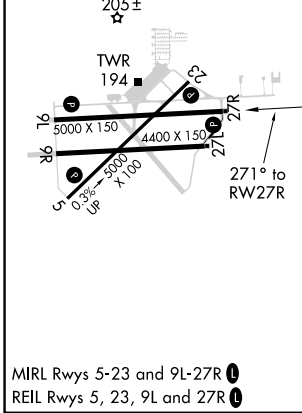
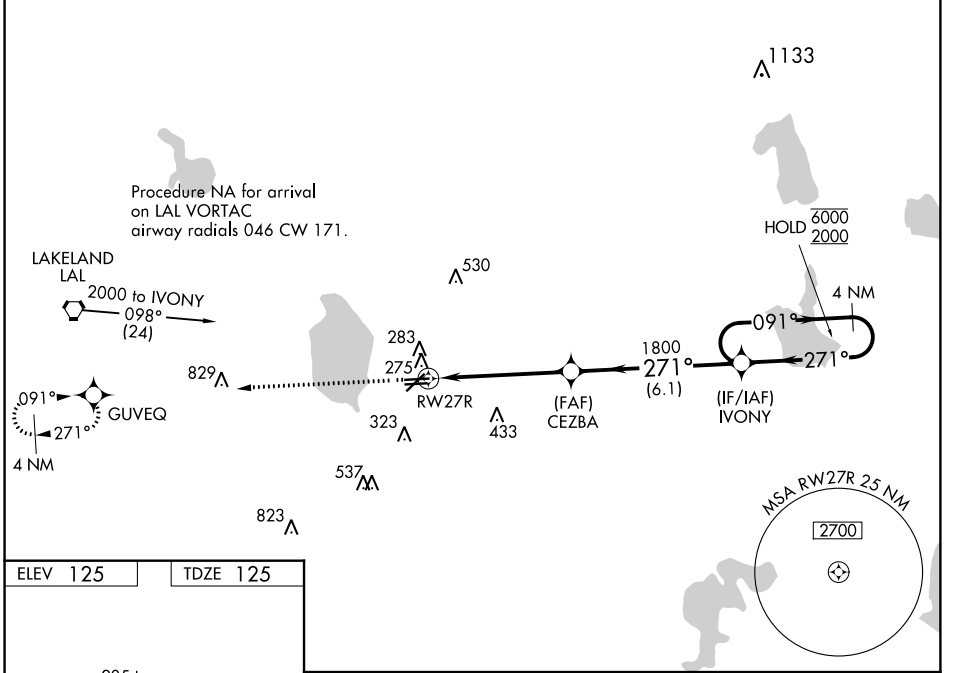
WAAS CH <b>82412</b> <b>W27A</b>	APP CRS <b>271°</b>	Rwy Idg TDZE <b>125</b> Apt Elev <b>125</b>	<b>5000</b>
--	------------------------	---	-------------

# RNAV (GPS) RWY 27R

BARTOW EXECUTIVE (BOW)

RNP APCH.	<p><b>▽</b> Rwy 27R helicopter visibility reduction below 3/4 SM NA. When local altimeter setting not received, use Tampa Intl altimeter setting and increase LPV DA to 576 feet, LNAV/VNAV DA to 636 feet and all MDA 120 feet, increase LPV visibility all Cats 1/2 SM, increase LNAV visibility Cat C 1/4 SM, Cat D 1/8 SM. For uncompensated Baro-VNAV systems, LNAV/VNAV NA below -1.5°C or above 54°C. VDP and Baro-VNAV NA when using Tampa Intl altimeter setting.</p>	<p>MISSED APPROACH: Climb to 2000 direct GUYEQ and hold.</p>

AWOS-3 <b>123.775</b>	TAMPA APP CON <b>120.65 290.3</b>	<b>BARTOW TOWER ★</b> <b>121.2</b> (CTAF)	GND CON <b>121.9</b>	UNICOM <b>122.95</b>
--------------------------	--------------------------------------	--	-------------------------	-------------------------



	2000	GUYEQ			
	*LNAV only.				
	RW27R				
	CEZBA				
	IVONY				
	4 NM Holding Pattern				
	GP 3.00° TCH 35				
	1.4	3.7 NM	6.1 NM		
CATEGORY	A	B	C	D	
LPV DA	470-1 1/4 345 (400-1 1/4)				
LNAV/VNAV DA	530-1 1/2 405 (500-1 1/2)				
LNAV MDA	580-1	455 (500-1)	580-1 3/8	580-1 1/2	455 (500-1 1/2)

SE-3, 07 NOV 2019 to 05 DEC 2019

SE-3, 07 NOV 2019 to 05 DEC 2019