

APP CRS	Rwy Idg	<b>4899</b>
<b>083°</b>	TDZE	<b>634</b>
	Apt Elev	<b>634</b>

# RNAV (GPS) RWY 8

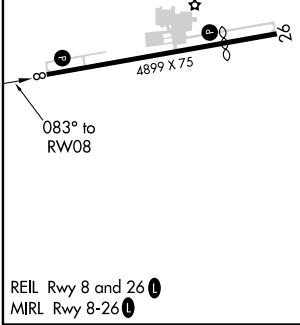
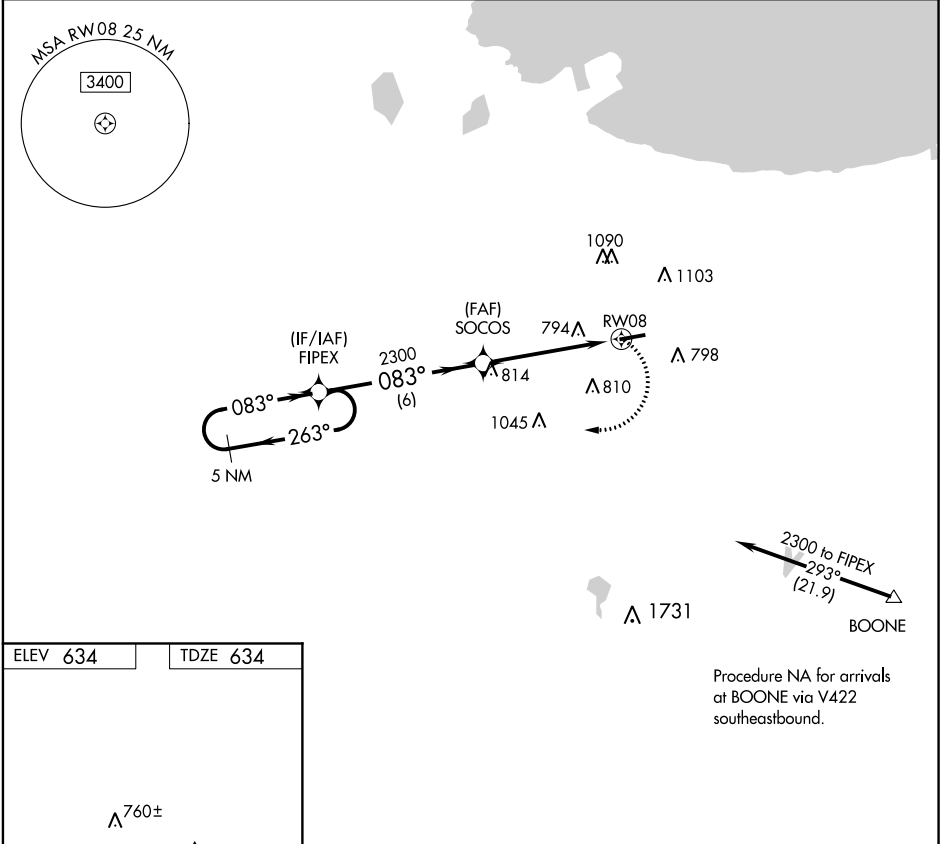
GRIFFITH-MERRILLVILLE (Ø5C)

RNP APCH.

▼ Obtain local altimeter setting on CTAF; when not received use Chicago Midway  
 ▲ NA Init altimeter setting and increase all MDAs 60 feet. Visibility reduction by helicopters NA. Procedure NA at night.

MISSED APPROACH: Climbing right turn to 2300 direct FIPEX and hold.

CHICAGO APP CON <b>133.1 285.6</b>	UNICOM <b>123.0 (CTAF) 0</b>
---------------------------------------	---------------------------------



5 NM Holding Pattern	VGSi and descent angles not coincident (VGSi Angle 3.50/TCH 44).		2300	FIPEX
	2300	263°	083°	2300
			083°	SOCOS
			3.04°	TCH 41
				RWY 08
		6 NM	5 NM	
CATEGORY	A	B	C	D
LNAV MDA	1080-1	446 (500-1)	NA	
CIRCLING	1200-1	566 (600-1)	NA	

EC-2, 07 NOV 2019 to 05 DEC 2019

EC-2, 07 NOV 2019 to 05 DEC 2019