

LOC I-RVS	APP CRS	Rwy Idg	<b>5102</b>
<b>109.95</b>	<b>010°</b>	TDZE	<b>626</b>
		Apt Elev	<b>638</b>

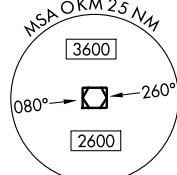
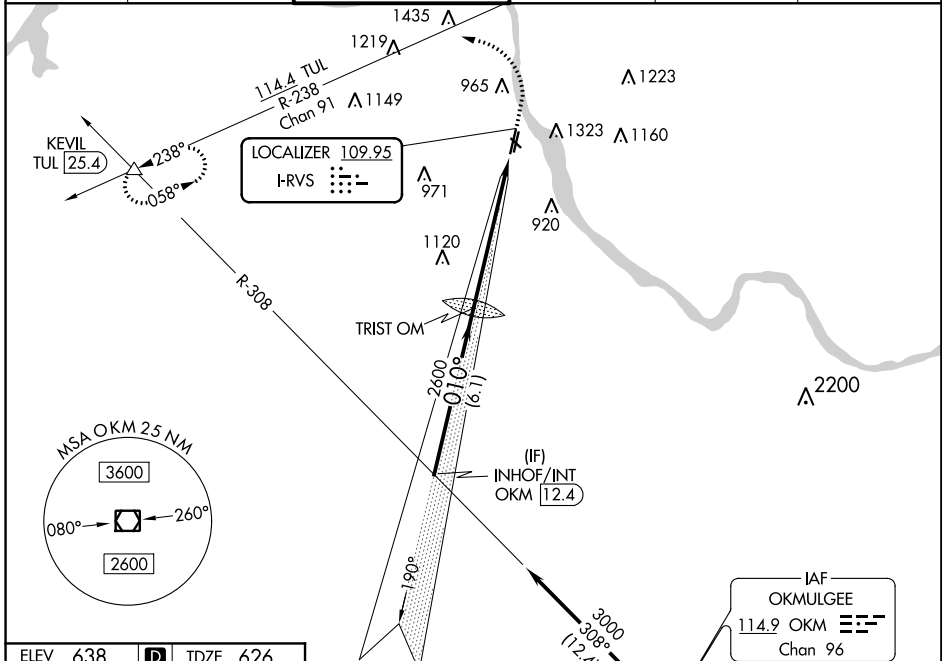
# ILS or LOC RWY 1L

RICHARD LLOYD JONES JR (RVS)

**⚠** Circling NA northeast of Rwy 31 and 19L.

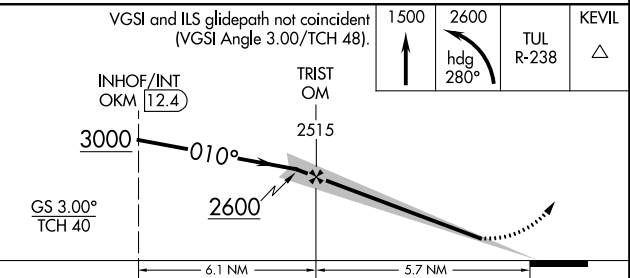
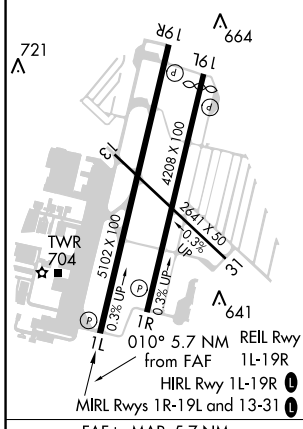
**⚠** MISSED APPROACH: Climb to 1500 then climbing left turn to 2600 on heading 280° and TUL VORTAC R-238 to KEVIL INT/TUL 25.4 DME and hold.

ATIS	TULSA APP CON	RIVERSIDE TOWER ★	GND CON	CLNC DEL	UNICOM
<b>126.5</b>	<b>134.7</b>	<b>120.3 (CTAF) 0</b>	<b>121.7</b>	<b>124.5</b>	<b>122.95</b>



Procedure NA for arrival on OKM VOR/DME airway radials 308 CW 359.

ELEV 638	<b>D</b>	TDZE 626
----------	----------	----------



CATEGORY	A	B	C	D
S-ILS 1L	826-3/4 200 (200-3/4)			
S-LOC 1L	1220-1	594 (600-1)	1220-1 3/4	594 (600-1 3/4)
<b>C</b> CIRCLING	1260-1 622 (700-1)	1280-1 642 (700-1)	1280-1 3/4 642 (700-1 3/4)	1360-2 1/4 722 (800-2 1/4)

SC-1, 07 NOV 2019 to 05 DEC 2019

SC-1, 07 NOV 2019 to 05 DEC 2019