

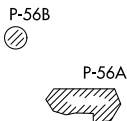
# JDUBB TWO DEPARTURE (RNAV)

AWOS-3  
125.225  
CLNC DEL  
118.55  
UNICOM (CTAF)  
122.975  
POTOMAC DEP CON  
125.05 350.2

**TOP ALTITUDE:  
3000**

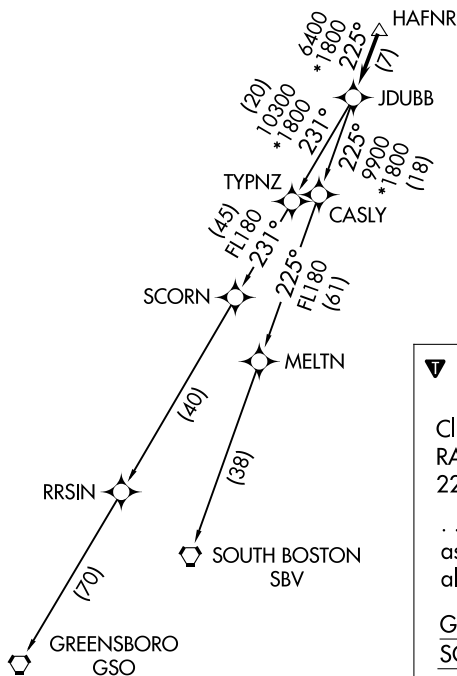
**TAKEOFF MINIMUMS:**  
Rwys 17, 35: Standard

- NOTE: RNAV 1.
- NOTE: RADAR required.
- NOTE: DME/DME/IRU or GPS required.
- NOTE: Takeoff Rwy 35 requires a climb to 1200 on heading 353° before proceeding on the ATC assigned heading for obstacle avoidance.



NE-3, 07 NOV 2019 to 05 DEC 2019

NE-3, 07 NOV 2019 to 05 DEC 2019



NOTE: Chart not to scale.

## DEPARTURE ROUTE DESCRIPTION

Climb on heading assigned by ATC, expect RADAR vectors to HAFNR, then on track 225° to JDUBB, thence. . . .

. . . . on assigned transition, maintain altitude assigned by ATC, expect clearance to filed altitude within ten (10) minutes after departure.

GREENSBORO TRANSITION (JDUBB2.GSO)  
SOUTH BOSTON TRANSITION (JDUBB2.SBV)