

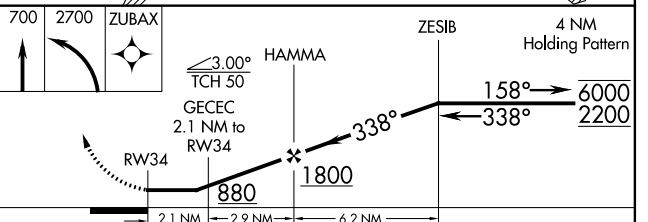
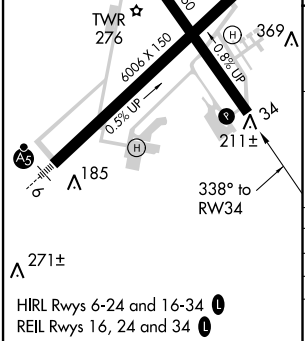
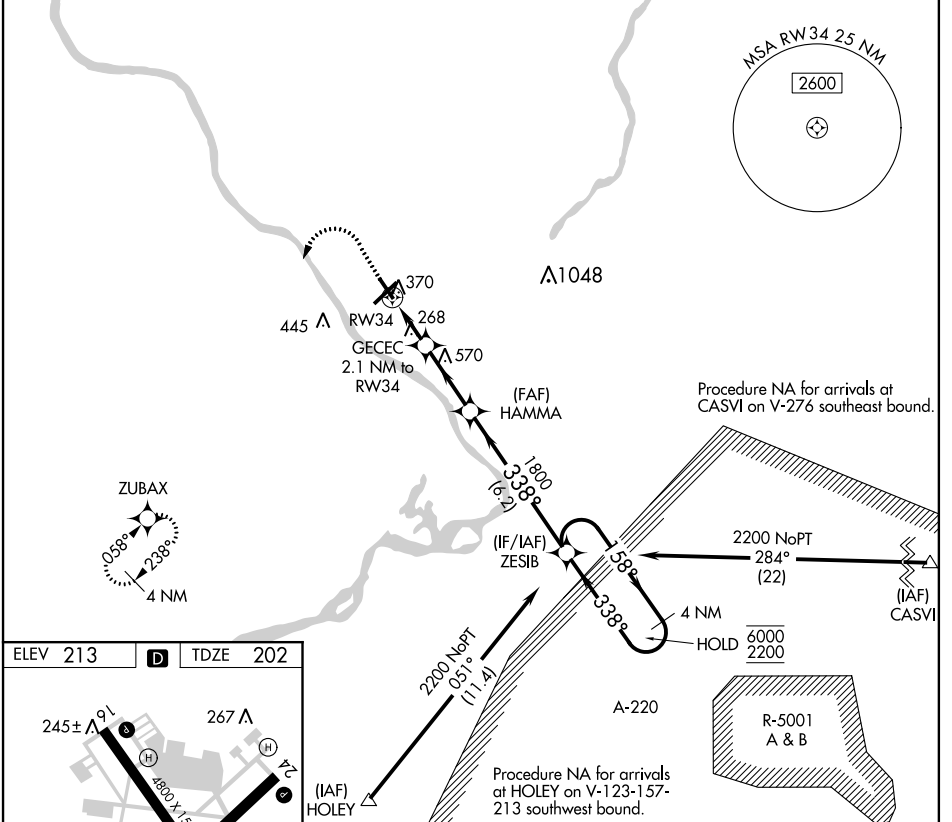
WAAS CH 40230 W34A	APP CRS 338°	Rwy Idg TDZE Apt Elev	4800 202 213
--	------------------------	-----------------------------	---

RNAV (GPS) RWY 34

TRENTON MERCER (TTN)

RNP APCH:
 ▼ Rwy 34 helicopter visibility reduction below 1 SM NA. Straight-in Rwy 34 at night, operational VGSI required, remain on or above VGSI glidepath until threshold. When Circling to Rwy 34 at night, operational VGSI required, remain on or above VGSI glidepath until threshold.
 MISSED APPROACH:
 (Do not exceed 250K until ZUBAX)
 Climb to 700 then climbing left turn to 2700 direct ZUBAX and hold.

ATIS 126.775	PHILADELPHIA APP CON 123.8	APP CON 291.7	TRENTON TOWER ★ 120.7 (CTAF) 0 257.8	GND CON 121.9 257.8	CLNC DEL 121.9 257.8	UNICOM 122.95
------------------------	--------------------------------------	-------------------------	--	-------------------------------	--------------------------------	-------------------------



CATEGORY	A	B	C	D
LP MDA	520-1 318 (400-1)			
LNAV MDA	620-1	418 (500-1)	620-1 $\frac{3}{8}$	418 (500-1 $\frac{3}{8}$)
CIRCLING	680-1	467 (500-1)	680-1 $\frac{1}{2}$	780-2 467 (500-1 $\frac{1}{2}$)

NE-2, 07 NOV 2019 to 05 DEC 2019

NE-2, 07 NOV 2019 to 05 DEC 2019