

WAAS CH 58320 W32A	APP CRS 319°	Rwy Idg TDZE Apt Elev	4401 1312 1324
--	------------------------	-----------------------------	---

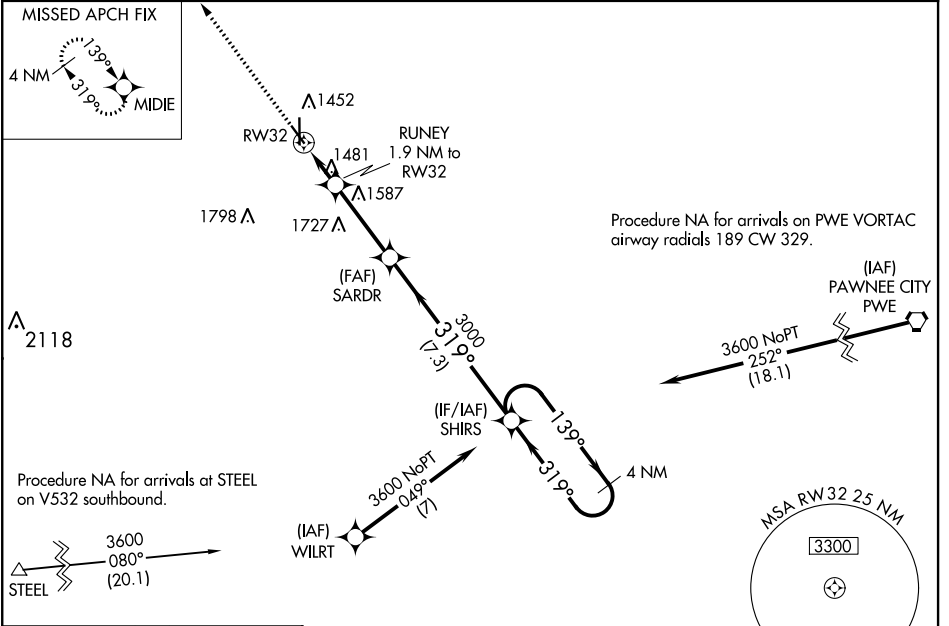
RNAV (GPS) RWY 32

BEATRICE MUNI (BIE)

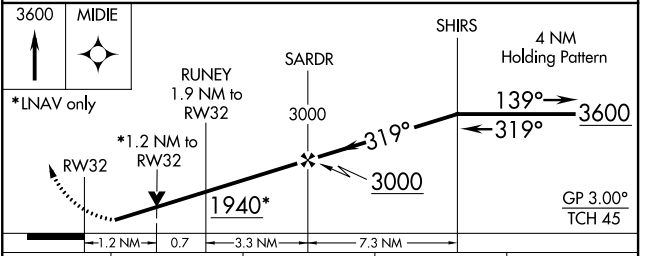
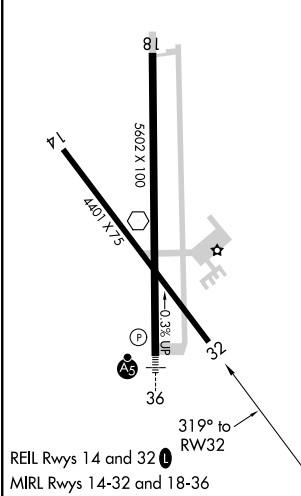
⚠ For uncompensated Baro-VNAV systems, LNAV/VNAV NA below -22°C (-7°F) or above 54°C (130°F).
⚠ DME/DME RNP-0.3 NA.
 Rwy 32 helicopter visibility reduction below ¾ SM NA.

MISSED APPROACH: Climb to 3600 direct MIDIE and hold.

AWOS-3 125.325	MINNEAPOLIS CENTER 126.4 317.7	COLUMBUS RADIO 122.5	UNICOM 122.8 (CTAF) ⓪
--------------------------	--	--------------------------------	--



ELEV 1324	D	TDZE 1312
-----------	----------	-----------



CATEGORY	A	B	C	D
LPV DA		1562-1	250 (300-1)	
LNAV/VNAV DA		1685-1½	373 (400-1½)	
LNAV MDA	1740-1	428 (500-1)	1740-1½	428 (500-1½)
C CIRCLING	1820-1	496 (500-1)	2000-2 676 (700-2)	2100-2½ 776 (800-2½)

NC-2, 07 NOV 2019 to 05 DEC 2019

NC-2, 07 NOV 2019 to 05 DEC 2019