

APP CRS <b>222°</b>	Rwy Idg <b>5997</b>
	TDZE <b>3373</b>
	Apt Elev <b>3374</b>

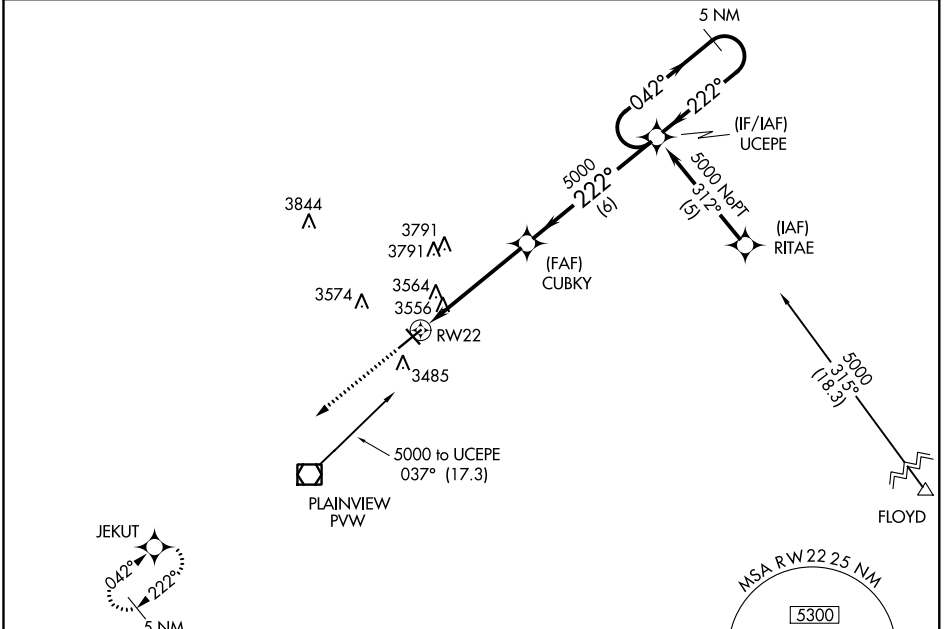
# RNAV (GPS) RWY 22

HALE COUNTY (PVW)

**▽** DME/DME RNP-0.3 NA. If local altimeter setting not received, use Lubbock altimeter setting and increase all MDAs 100 feet.  
**▲** Visibility reduction by helicopters NA.

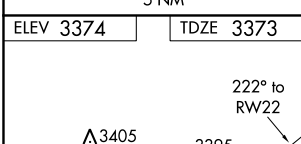
MISSED APPROACH: Climb to 5100 direct JEKUT and hold.

ASOS <b>119.675</b>	LUBBOCK APP CON <b>119.2 351.8</b>	CLNC DEL <b>121.7</b>	UNICOM <b>123.0 (CTAF) 0</b>
------------------------	---------------------------------------	--------------------------	---------------------------------

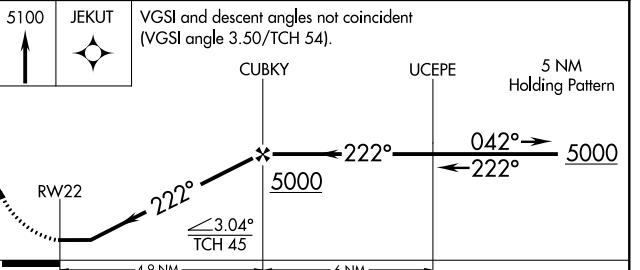


SC-2, 07 NOV 2019 to 05 DEC 2019

SC-2, 07 NOV 2019 to 05 DEC 2019



Procedure NA for arrivals at PVW VOR/DME via V81 southbound.



ELEV 3374	TDZE 3373
REIL Rwy 4 and 22 LIRL Rwy 4-22 and 13-31 0	

CATEGORY	A	B	C	D
LNAV MDA	3820-1	447 (500-1)	3820-1¼ 447 (500-1¼)	3820-1½ 447 (500-1½)
CIRCLING	3920-1 546 (600-1)	3940-1 566 (600-1)	3940-1½ 566 (600-1½)	3940-2 566 (600-2)