

WAAS CH 56315 W34A	APP CRS 337°	Rwy Idg 7203 TDZE 796 Apt Elev 799
--	------------------------	---

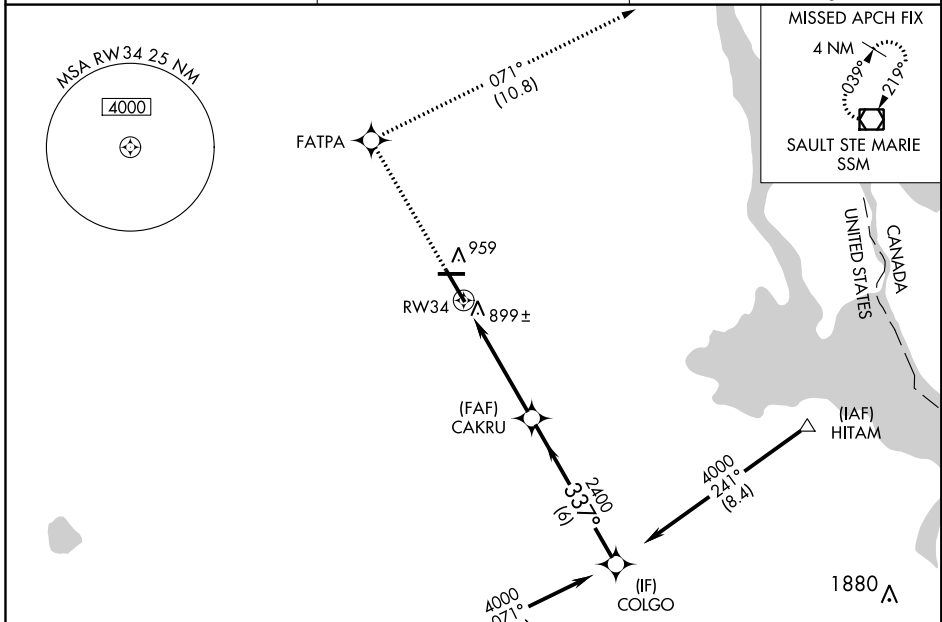
RNAV (GPS) RWY 34

CHIPPEWA COUNTY INTL (CIU)

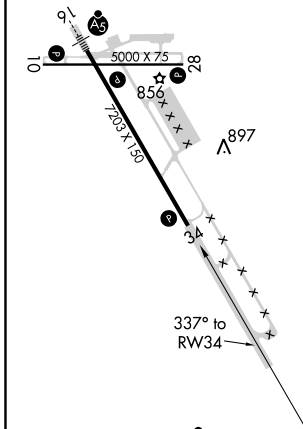
⚠ For uncompensated Baro-VNAV systems, LNAV/VNAV NA below -16°C (4°F) or above 54°C (130°F). DME/DME RNP-0.3 NA. When local altimeter setting not received, use Sault Ste Marie Muni/Sanderson Field altimeter setting and increase all DA 45 feet and all MDA 60 feet; increase LNAV Cat D visibility ¼ mile. Baro-VNAV and VDP NA when using Sault Ste Marie Muni/Sanderson Field altimeter setting.

MISSED APPROACH: Climb to 3000 direct FATPA and track 071° to SSM VOR/DME and hold.

AWOS-3PT 127.575	TORONTO CENTER 132.65 344.5	UNICOM 123.0 (CTAF) 0
----------------------------	---------------------------------------	---------------------------------

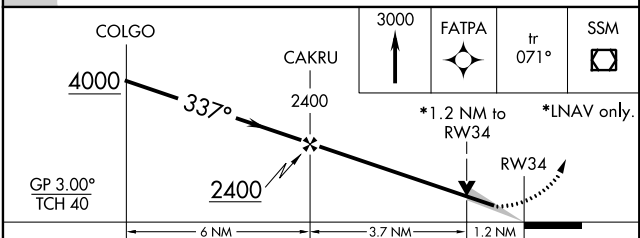


ELEV 799	D	TDZE 796
----------	----------	----------



REIL Rws 10, 28 and 34
MIRL Rwy 10-28
HIRL Rwy 16-34

Procedure NA for arrival at PINES via V193 southbound.



CATEGORY	A	B	C	D
LPV DA		1046-1	250 (300-1)	
LNAV/DA VNAV		1198-1½	402 (400-1½)	
LNAV MDA	1200-1	404 (400-1)	1200-1¼	404 (400-1¼)
CIRCLING	1260-1	461 (500-1)	1260-1½ 461 (500-1½)	1360-2 561 (600-2)

EC-1, 07 NOV 2019 to 05 DEC 2019

EC-1, 07 NOV 2019 to 05 DEC 2019