

APP CRS 097°	Rwy Idg 5000
	TDZE 799
	Apt Elev 799

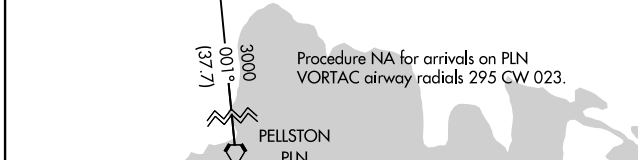
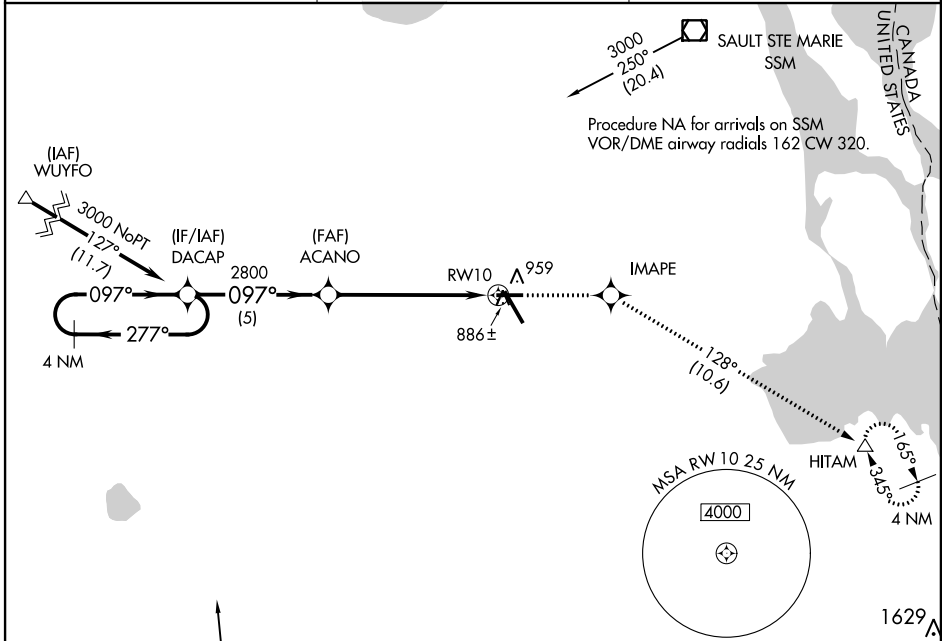
RNAV (GPS) RWY 10

CHIPPEWA COUNTY INTL (CIU)

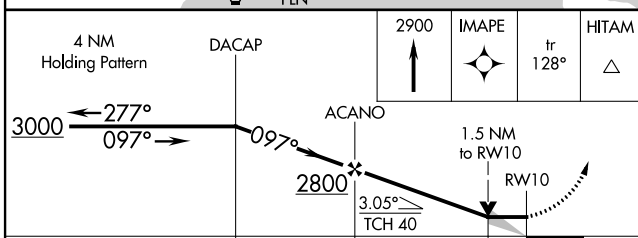
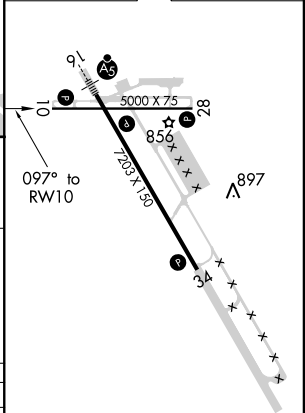
⚠ DME/DME RNP-0.3 NA, VDP NA with Sault Ste Marie altimeter setting. When local altimeter setting not received, use Sault Ste Marie Muni/Sanderson Field altimeter setting and increase all MDA 60 feet, increase LNAV visibility Cat C/D and Circling Cat C ¼ mile.

⚠ MISSED APPROACH: Climb to 2900 direct IMAPE and track 128° to HITAM and hold.

AWOS-3PT 127.575	TORONTO CENTER 132.65 344.5	UNICOM 123.0 (CTAF)
----------------------------	---------------------------------------	-------------------------------



ELEV 799	D TDZE 799
----------	-------------------



CATEGORY	A	B	C	D
LNAV MDA	1320-1	521 (600-1)	1320-1½	521 (600-1½)
CIRCLING	1320-1	521 (600-1)	1320-1½	1360 - 2 561 (600-2)

REIL Rwy 10, 28 and 34 **Ⓛ**
 MIRL Rwy 10-28 **Ⓛ**
 HIRL Rwy 16-34 **Ⓛ**

EC-1, 07 NOV 2019 to 05 DEC 2019

EC-1, 07 NOV 2019 to 05 DEC 2019