

MARYSVILLE, CALIFORNIA

# ILS or LOC Y RWY 33

LOC I-MIZ <b>109.5</b>	APCH CRS <b>325°</b>	Rwy ldg TDZE Arprt Elev	<b>12,001</b> <b>105</b> <b>113</b>
---------------------------	-------------------------	-------------------------------	---

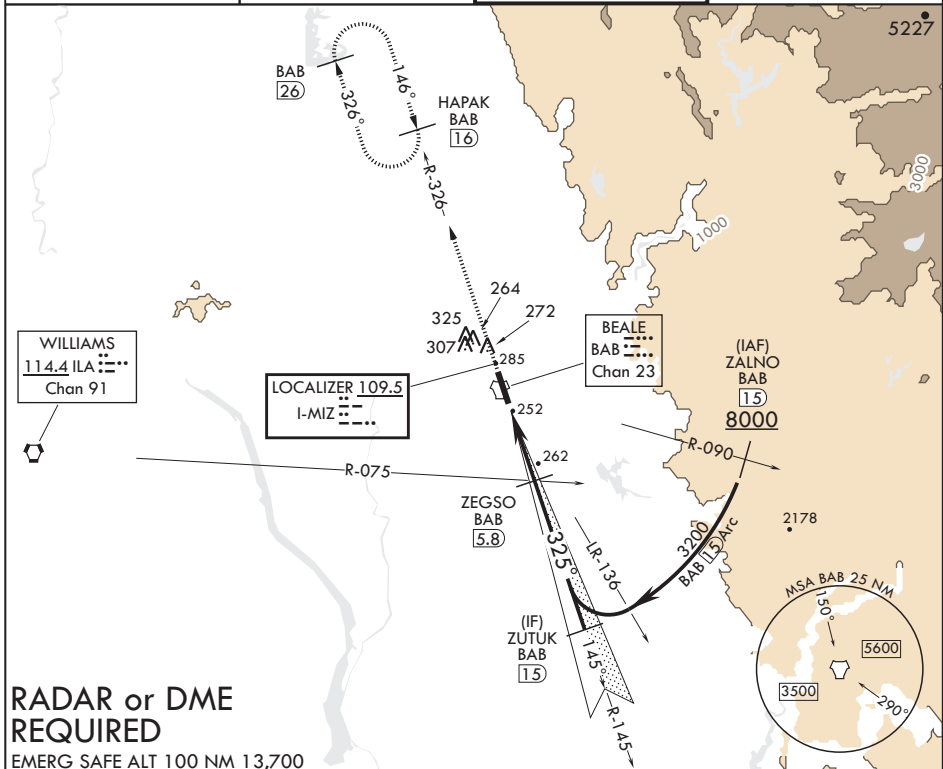
AL-771 (USAF)

BEALE AFB (KBAB)

**▽** \* When ALS inop, increase CAT ABCDE RVR to 40 and vis to 3/4 mile.  
 \*\* When ALS inop, increase CAT AB RVR to 55 and vis to 1 mile, CAT CDE RVR to 60 and vis to 1 1/8 miles.  
 \*\*\* Circling not authorized E of Rwy 15-33.

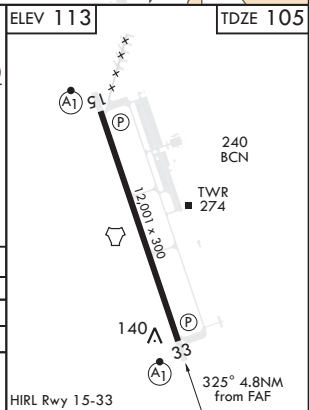
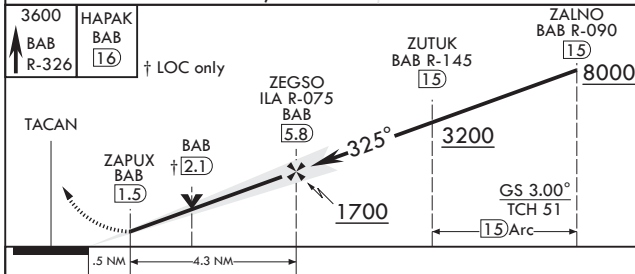
ALSF-1 MISSED APPROACH: Climb to 3600 intercept BAB TACAN R-326 to HAPAK and hold.

ATIS* <b>124.55 273.5</b>	NORCAL APP CON <b>125.4 259.1</b>	TOWER* <b>119.4 284.75</b>	GND CON <b>121.6 257.75</b>
------------------------------	--------------------------------------	-------------------------------	--------------------------------



## RADAR or DME REQUIRED

EMERG SAFE ALT 100 NM 13,700



CATEGORY	A	B	C	D	E
S-ILS 33*	305/24		200	(200-1/2)	
S-LOC 33**	520/24	415 (500-1/2)	520/40	415	(500-3/4)
<b>C</b> CIRCLING***	600-1	487 (500-1)	600-1 1/2 487 (500-1 1/2)	680-2 567 (600-2)	840-2 1/2 727 (800-2 1/2)

MARYSVILLE, CALIFORNIA

39°08'N - 121°26'W

BEALE AFB (KBAB)

Amdt 5 20JUL17

# ILS or LOC Y RWY 33

SW-2, 07 NOV 2019 to 05 DEC 2019

SW-2, 07 NOV 2019 to 05 DEC 2019