

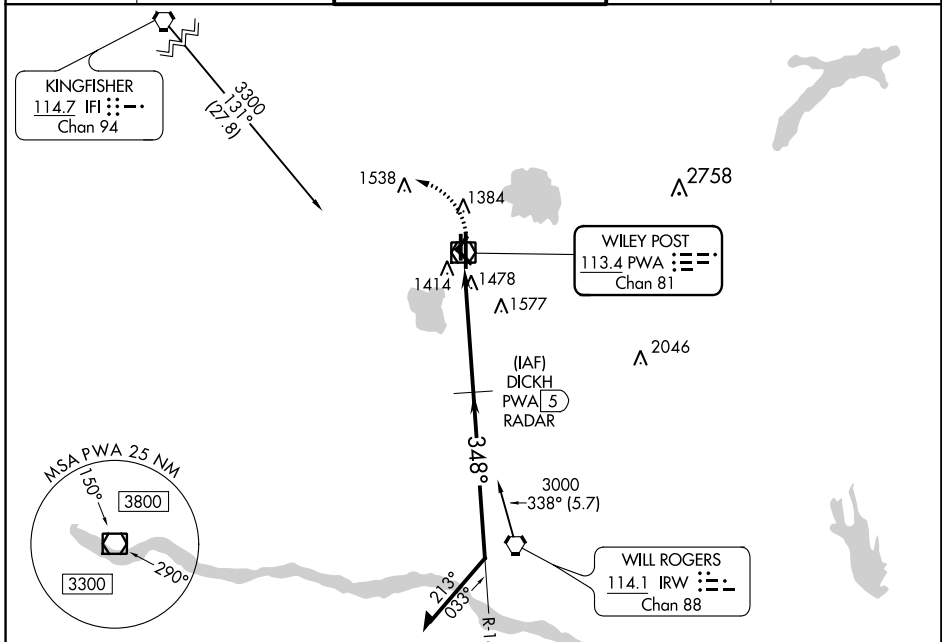
VOR/DME PWA 113.4 Chan 81	APP CRS 348°	Rwy Idg TDZE Apt Elev 6844 1299 1300
---	------------------------	--

VOR RWY 35R

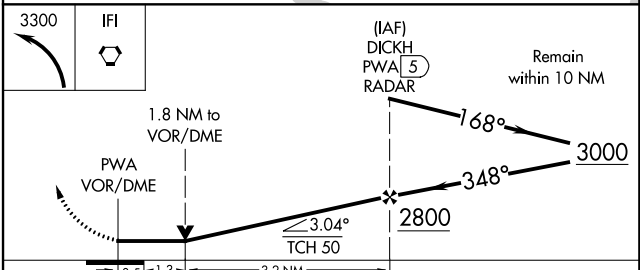
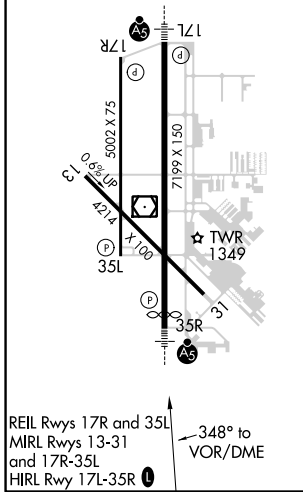
WILEY POST (PWA)

ASR RADAR or DME required. Inop table does not apply.	MALS R AS	MISSED APPROACH: Climbing left turn to 3300 direct IFI VORTAC.
--	--------------	--

ATIS 128.725	OKE CITY APP CON 124.6 266.8	WILEY POST TOWER ★ 126.9 (CTAF) 306.9	GND CON 121.7	UNICOM 122.95
------------------------	--	--	-------------------------	-------------------------



ELEV 1300	D	TDZE 1299
-----------	---	-----------



CATEGORY	A	B	C	D
S-35R	1740-1 441 (500-1)		1740-1½ 441 (500-1½)	1740-1½ 441 (500-1½)
CIRCLING	1780-1 480 (500-1)		1880-1½ 580 (600-1½)	1880-2 580 (600-2)

SC-1, 07 NOV 2019 to 05 DEC 2019

SC-1, 07 NOV 2019 to 05 DEC 2019