

LOC I-PWA <b>110.15</b>	APP CRS <b>175°</b>	Rwy Idg TDZE Apt Elev	<b>6844</b> <b>1291</b> <b>1300</b>
----------------------------	------------------------	-----------------------------	---

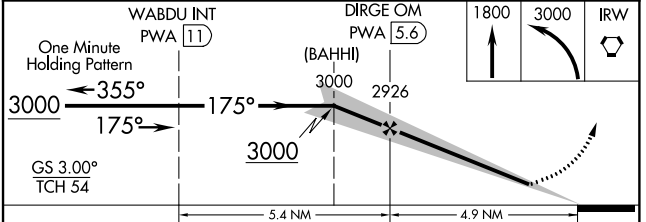
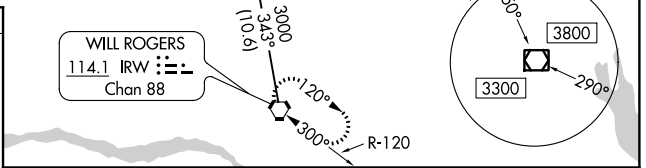
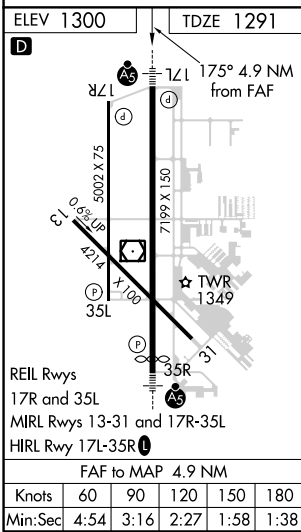
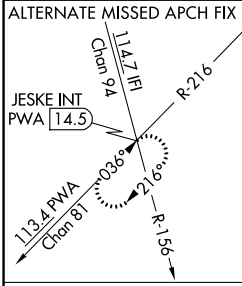
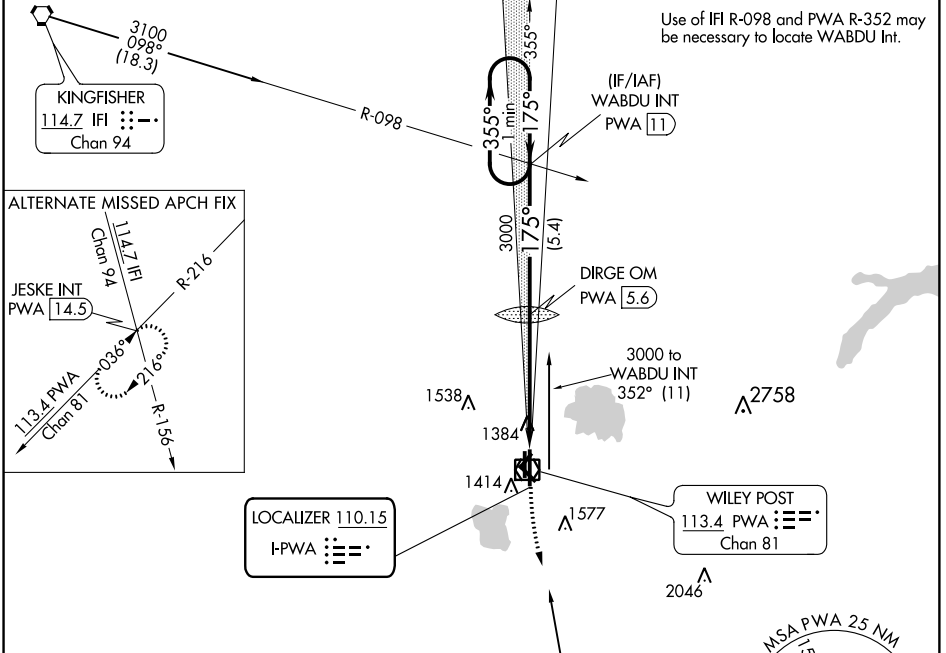
# ILS or LOC RWY 17L

WILEY POST (PWA)

**⚠** When local altimeter setting not received, use Will Rogers World altimeter setting and increase all DA 21 feet and all MDA 40 feet and increase S-LOC 17L Cat C visibility ¼ mile.

**MALSR** MISSED APPROACH: Climb to 1800 then climbing left turn to 3000 direct IRW VORTAC and hold.

ATIS <b>128.725</b>	OKE CITY APP CON <b>124.6 266.8</b>	WILEY POST TOWER ★ <b>126.9 (CTAF) 306.9</b>	GND CON <b>121.7</b>	UNICOM <b>122.95</b>
------------------------	--	---	-------------------------	-------------------------



CATEGORY	A	B	C	D
S-ILS 17L	1491-½		200 (200-½)	
S-LOC 17L	1660-½		369 (400-½)	
CIRCLING	1780-1	480 (500-1)	1880-1½	1880-2
			580 (600-1½)	580 (600-2)

SC-1, 07 NOV 2019 to 05 DEC 2019

SC-1, 07 NOV 2019 to 05 DEC 2019