

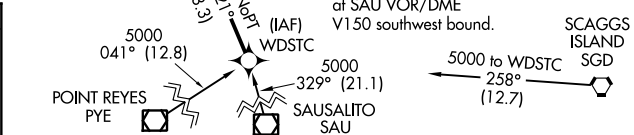
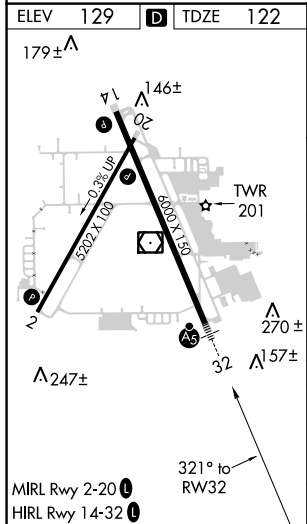
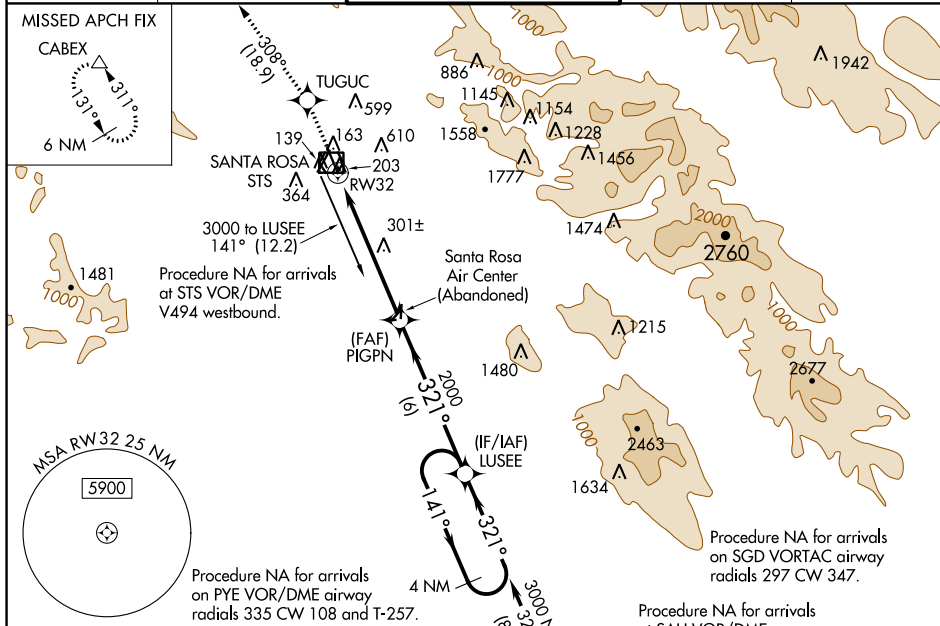
WAAS CH 72611 W32A	APP CRS 321°	Rwy Idg 6000 TDZE 122 Apt Elev 129
--	------------------------	---

RNAV (GPS) RWY 32

CHARLES M SCHULZ-SONOMA COUNTY (STS)

RNP APCH.	MALSR	MISSED APPROACH: Climb to 6000 direct TUGUC and on track 308° to CABEX and hold, continue climb-in-hold to 6000.
<p>For uncompensated Baro-VNAV systems, LNAV/VNAV NA below -4°C or above 54°C. # RVR 1800 authorized with use of FD or AP or HUD to DA.</p>		

ATIS 120.55	OAKLAND CENTER 127.8 353.5	SANTA ROSA TOWER* 118.5 (CTAF) 0 363.0	GND CON 121.9	UNICOM 122.95
-----------------------	--------------------------------------	--	-------------------------	-------------------------



6000	TUGUC	tr 308°	CABEX	LUSEE	4 NM Holding Pattern
					141° 3000 321° 2000 PIGPN 2000 321° RW32 *1.2 NM to RW32 4.5 NM 6 NM GP 3.00° TCH 53
CATEGORY	A	B	C	D	
LPV DA #		322/24	200 (200-½)		
LNAV/VNAV DA		570/50	448 (500-1)		
LNAV MDA	560/24	438 (500-½)	560/40	438 (500-¾)	
CIRCLING	600-1 471 (500-1)	680-1 551 (600-1)	1080-3 951 (1000-3)	1420-3 1291 (1300-3)	

SW-2: 07 NOV 2019 to 05 DEC 2019

SW-2: 07 NOV 2019 to 05 DEC 2019