

APP CRS	Rwy Idg	<b>5000</b>
<b>333°</b>	TDZE	<b>999</b>
	Apt Elev	<b>1009</b>

# RNAV (GPS) RWY 33

WORCESTER RGNL (ORH)

RNP APCH.

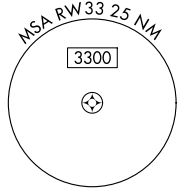
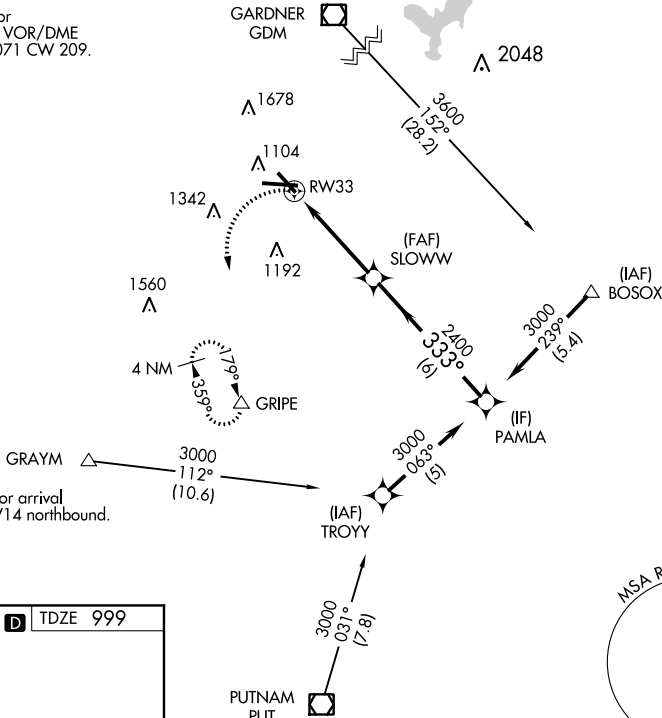
- ▼ When local altimeter setting not received, use Bedford altimeter setting and increase all
- ▲ MDAs 200 feet and visibility LNAV Cat C/D  $\frac{3}{8}$  SM and visibility Circling Cat B  $\frac{1}{4}$  SM and Cat C  $\frac{3}{4}$  SM. VDP NA with Bedford altimeter setting.

MISSED APPROACH:  
Climbing left turn to 3000  
direct GRIPE and hold.

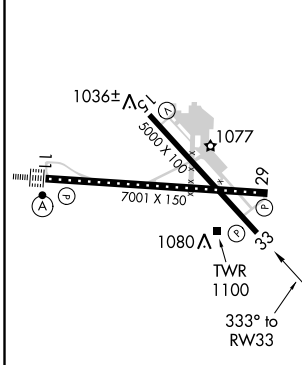
ATIS	YANKEE APP CON	WORCESTER TOWER★	GND CON	CNLC DEL	UNICOM
<b>126.55</b>	<b>119.0 327.1</b>	<b>120.5 (CTAF) 263.0</b>	<b>123.85</b>	<b>128.65</b> <b>119.0</b> (when tower closed)	<b>122.95</b>

Procedure NA for arrival on GDM VOR/DME airway radials 071 CW 209.

Procedure NA for arrival at GRAYM on V14 northbound.



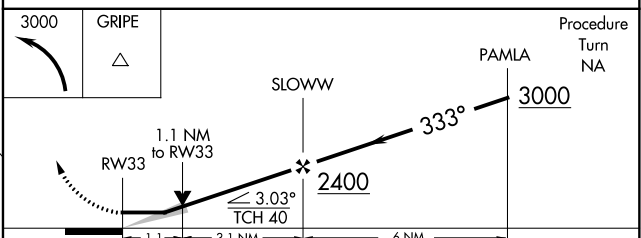
ELEV 1009	<b>D</b>	TDZE 999
-----------	----------	----------



TDZ/CL Rwy 11  
REIL Rlys 15, 29 and 33 **1**

HIRL Rwy 11-29 **1**

MIRL Rwy 15-33 **1**



CATEGORY	A	B	C	D
LNAV MDA	1480-1	482 (500-1)	1480 -1 $\frac{3}{8}$	482 (500-1 $\frac{3}{8}$ )
CIRCLING	1560-1 551 (600-1)	1640-1 631 (700-1)	1720-2 711 (800-2)	2000-3 991 (1000-3)

NE-1, 07 NOV 2019 to 05 DEC 2019

NE-1, 07 NOV 2019 to 05 DEC 2019