

LOC/DME I-RSR <b>110.9</b> Chan <b>46</b>	APP CRS <b>109°</b>	Rwy ldg TDZE Apt Elev	<b>7001</b> <b>980</b> <b>1009</b>
---	------------------------	-----------------------------	--

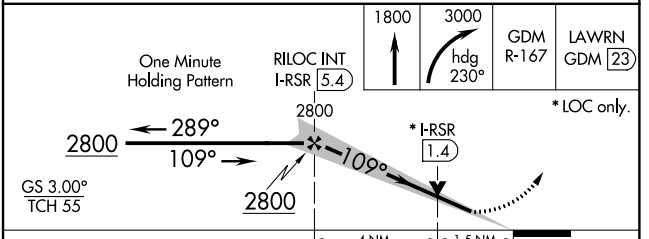
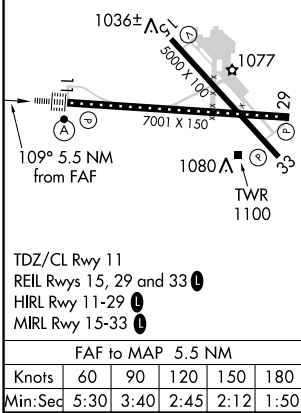
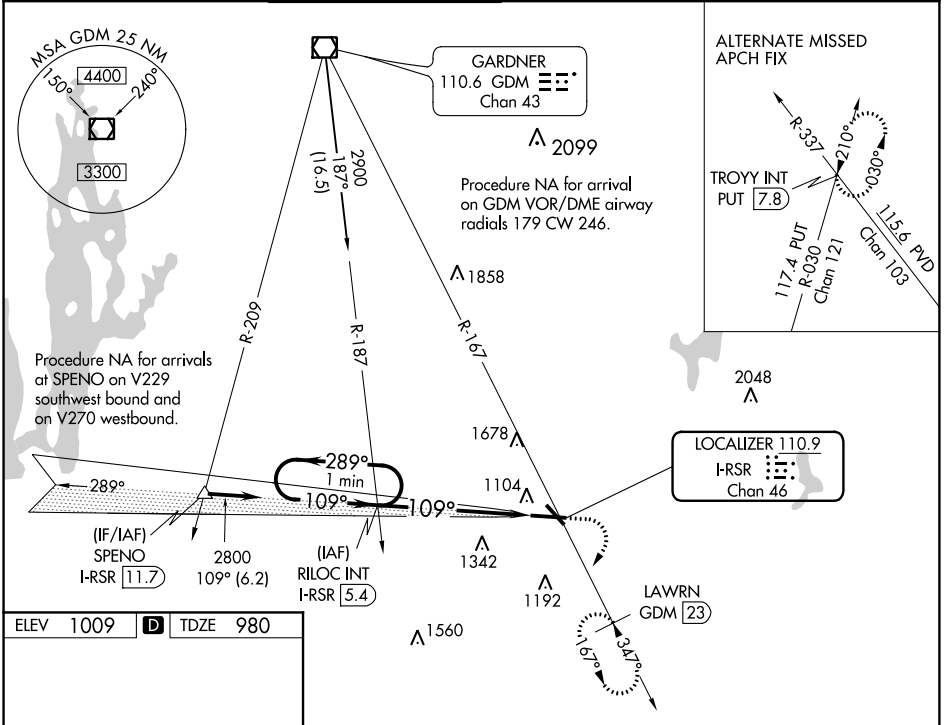
# ILS or LOC RWY 11

WORCESTER RGNL (ORH)

**▼** DME required. For inop ALS, increase S-LOC 11 Cats C and D visibility to 1 3/8 SM. When control tower closed: Inop table does not apply to S-ILS 11 all Cats. When control tower closed: for inop ALS, increase S-LOC 11 Cat C and D visibility to 1 3/8 SM.

**ALSF-2**  
MISSED APPROACH: Climb to 1800 then climbing right turn to 3000 on heading 230° and GDM VOR/DME R-167 to LAWWRN/GDM 23 DME and hold, continue climb-in-hold to 3000.

ATIS <b>126.55</b>	YANKEE APP CON <b>119.0 327.1</b>	WORCESTER TOWER★ <b>120.5 (CTAF) 263.0</b>	GND CON <b>123.85</b>	CLNC DEL <b>128.65</b> <b>119.0</b> (when tower closed)	UNICOM <b>122.95</b>
-----------------------	--------------------------------------	---	--------------------------	---	-------------------------



CATEGORY	A	B	C	D
S-ILS 11	1180/18		200 (200-1/2)	
S-LOC 11	1500/24	520 (500-1/2)	1500/55	520 (500-1)
<b>C</b> CIRCLING	1560-1 551 (600-1)	1720-1 711 (800-1)	2000-3	991 (1000-3)

NE-1, 07 NOV 2019 to 05 DEC 2019

NE-1, 07 NOV 2019 to 05 DEC 2019