

LOC/DME I-RSR 110.9 Chan 46	APP CRS 109°	Rwy ldg TDZE Apt Elev	7001 980 1009
---	------------------------	-----------------------------	--

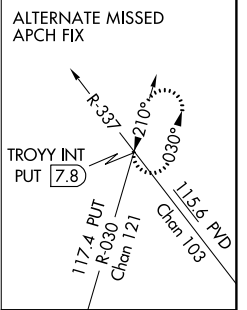
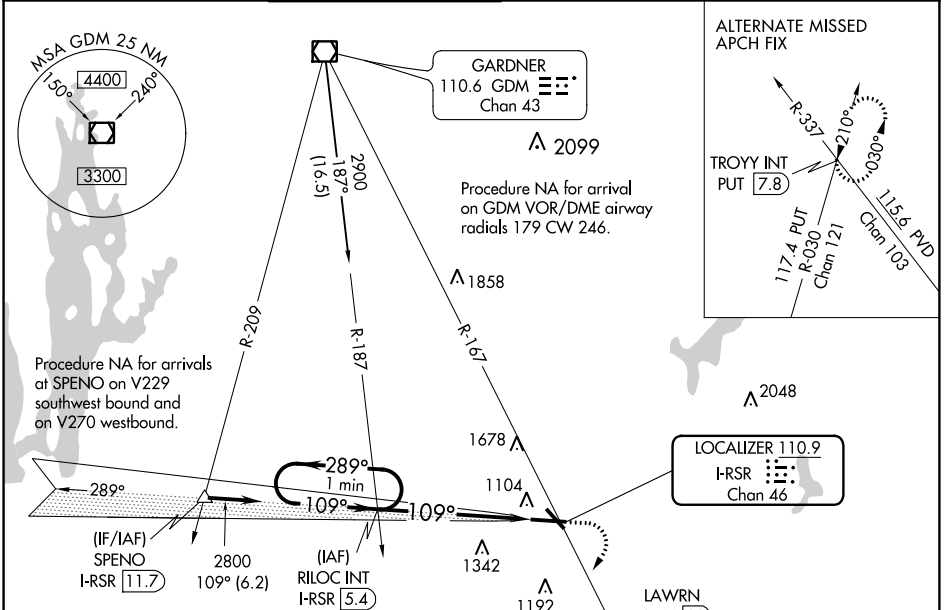
ILS RWY 11 (CAT II & III)

WORCESTER RGNL (ORH)

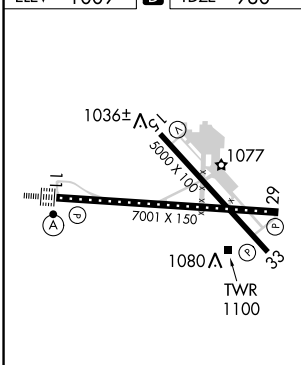
▼ DME required. CAT II: RVR 1000 authorized with specific OPSPEC, MSPEC, or LOA approval and use of autoland or HUD to touchdown.
▲ Procedure NA when tower closed.

ALSIF-2 MISSED APPROACH: Climb to 1800 then climbing right turn to 3000 on heading 230° and GDM VOR/DME R-167 to LAWWRN/GDM 23 DME and hold, continue climb-in-hold to 3000.

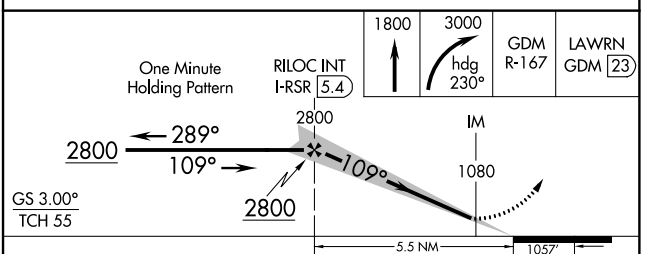
ATIS 126.55	YANKEE APP CON 119.0 327.1	WORCESTER TOWER★ 120.5 (CTAF) 263.0	GND CON 123.85	CLNC DEL 128.65 119.0 (when tower closed)	UNICOM 122.95
-----------------------	--------------------------------------	---	--------------------------	---	-------------------------



ELEV 1009	D	TDZE 980
-----------	----------	----------



TDZ/CL Rwy 11	REIL Rwys 15, 29 and 33
HIRL Rwy 11-29	MIRL Rwy 15-33



CATEGORY	A	B	C	D
S-ILS 11	CAT II RA 119/12 100 DA 1080			
S-ILS 11	CAT III RVR 06			

CATEGORY II & III ILS - SPECIAL AIRCREW & AIRCRAFT CERTIFICATION REQUIRED

NE-1, 07 NOV 2019 to 05 DEC 2019

NE-1, 07 NOV 2019 to 05 DEC 2019