

WAAS CH <b>69211</b> <b>W14A</b>	APP CRS <b>143°</b>	Rwy Idg TDZE Apt Elev	<b>6399</b> <b>668</b> <b>668</b>
--	------------------------	-----------------------------	---

# RNAV (GPS) RWY 14

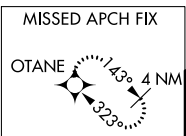
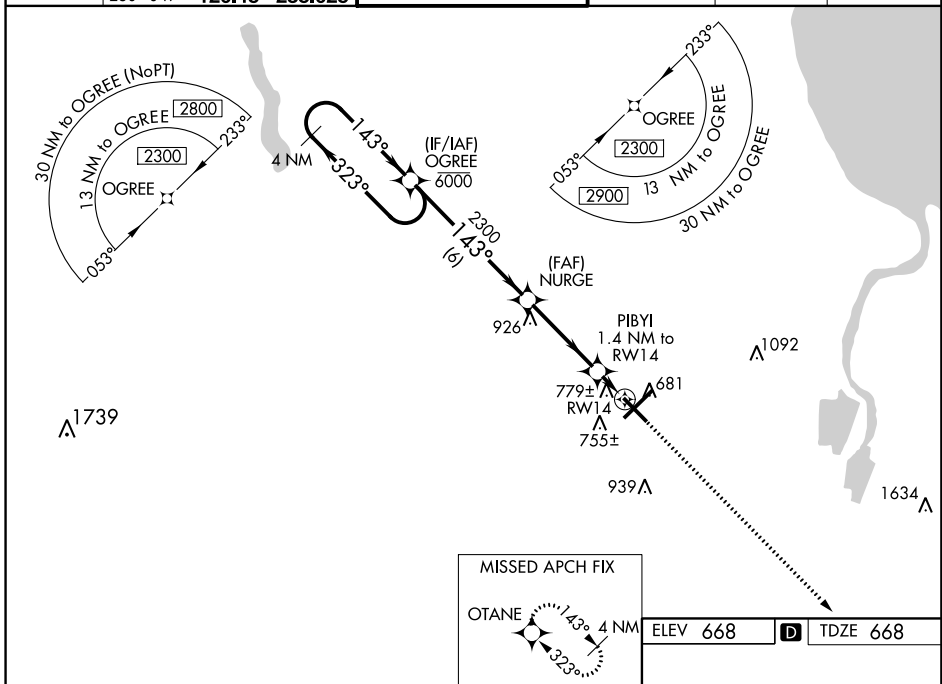
MBS INTL (MBS)

RNP APCH.

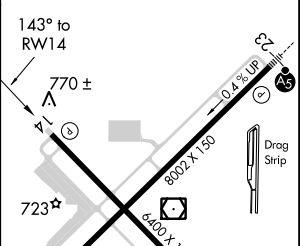
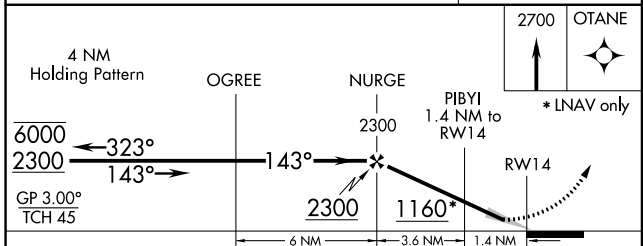
**▽** For uncompensated Baro-VNAV systems, LNAV/VNAV NA below -18°C or above 54°C.

MISSED APPROACH: Climb to 2700 direct OTANE and hold.

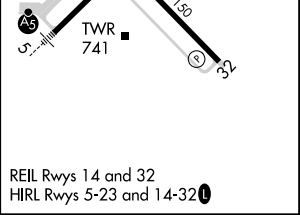
ATIS <b>125.925</b>	GREAT LAKES APP CON ★ 050°-229° <b>120.95</b> <b>235.625</b> 230°-049° <b>126.45</b> <b>235.625</b>	SAGINAW TOWER ★ <b>120.1</b> (CTAF) <b>257.7</b>	GND CON <b>121.7</b>	CLNC DEL <b>121.85</b>	UNICOM <b>122.95</b>
------------------------	---	---	-------------------------	---------------------------	-------------------------



ELEV 668	<b>D</b>	TDZE 668
----------	----------	----------



CATEGORY	A	B	C	D
LPV DA		868- <sup>3</sup> / <sub>4</sub>	200 (200- <sup>3</sup> / <sub>4</sub> )	
LNAV/VNAV DA		960- <sup>7</sup> / <sub>8</sub>	292 (300- <sup>7</sup> / <sub>8</sub> )	
LNAV MDA		1040-1	372 (400-1)	
<b>C</b> CIRCLING	1080-1 412 (500-1)	1120-1 452 (500-1)	1240-1½ 572 (600-1½)	1240-2 572 (600-2)



EC-1, 07 NOV 2019 to 05 DEC 2019

EC-1, 07 NOV 2019 to 05 DEC 2019