

VORTAC P 116.4 Chan 111	APP CRS 164°	Rwy Idg TDZE Apt Elev	2864 6 7
---	------------------------	-----------------------------	-------------------------------------

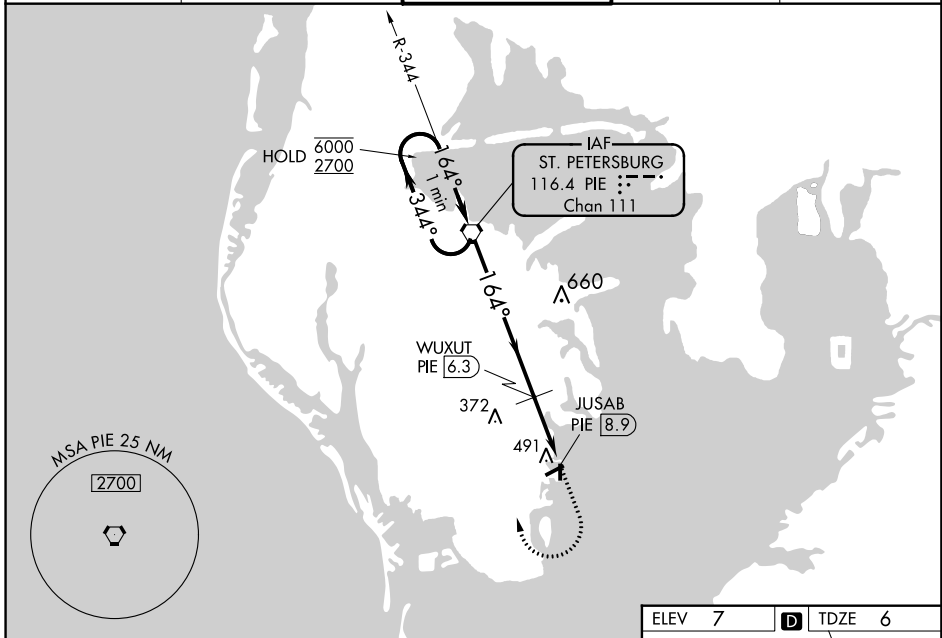
VOR RWY 18

ALBERT WHITTED (SPG)

⚠ Circling to Rwy 36 NA at night.
Rwy 18 helicopter visibility reduction below ¾ SM NA.

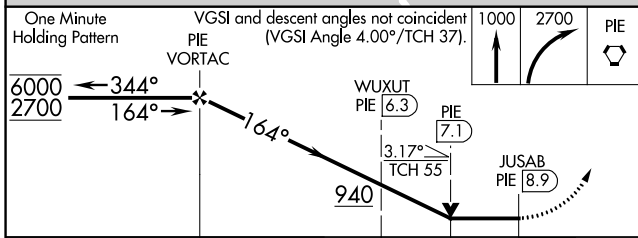
MISSED APPROACH: Climb to 1000 then climbing right turn to 2700 direct PIE VORTAC and hold.

ASOS 118.875	TAMPA APP CON 119.65 316.05 (EAST) 125.3 316.05 (WEST)	ALBERT WHITTED TOWER * 127.4 (CTAF) 257.6	GND CON 121.8	UNICOM 122.95
------------------------	--	---	-------------------------	-------------------------

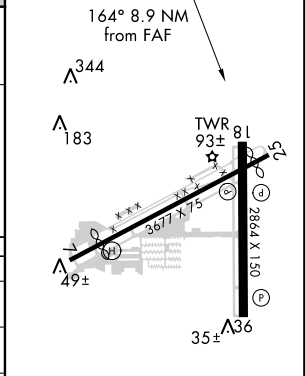


SE-3, 07 NOV 2019 to 05 DEC 2019

SE-3, 07 NOV 2019 to 05 DEC 2019



ELEV 7	D TDZE 6
---------------	------------------------



One Minute Holding Pattern	VGSIs and descent angles not coincident (VGSIs Angle 4.00°/TCH 37).		1000	2700	PIE
6000 2700	← 344°	→ 164°	↑	↘	⬠
			WUXUT PIE 6.3	PIE 7.1	JUSAB PIE 8.9
			3.17° TCH 55		
			940		
			6.3 NM	0.8 NM	1.8 NM
CATEGORY	A	B	C	D	
S-18	940-1¼	934 (1000-1¼)		NA	
C CIRCLING	940-1¼	933 (1000-1¼)		NA	
WUXUT FIX MINIMUMS (DME REQUIRED)					
S-18	800-1 794 (800-1)	800-1¼ 794 (800-1¼)		NA	
C CIRCLING	860-1¼	853 (900-1¼)		NA	

MIRL Rwy 7-25 and 18-36	
REIL Rwy 7, 18, 25 and 36	
FAF to MAP 8.9 NM	
Knots	60 90 120 150 180
Min:Sec	8:54 5:56 4:27 3:34 2:58