

APP CRS	Rwy Idg	<b>2864</b>
<b>005°</b>	TDZE	<b>6</b>
	Apt Elev	<b>7</b>

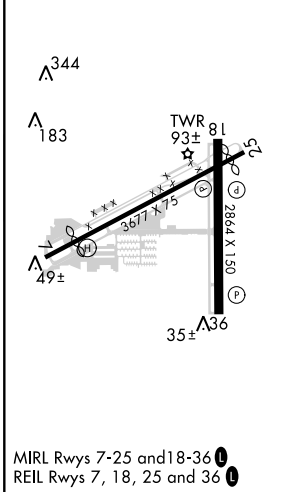
# RNAV (GPS) RWY 36

ALBERT WHITTED (SPG)

RNP APCH.		MISSED APPROACH: Climb to 500 then climbing right turn to 2000 direct to JRGAL and hold.	
<p>Procedure NA at night. Rwy 36 helicopter visibility reduction below 1 SM NA.</p>			
ASOS	TAMPA APP CON	ALBERT WHITTED TOWER *	GND CON
<b>118.875</b>	<b>119.65 316.05 (EAST)</b> <b>125.3 316.05 (WEST)</b>	<b>127.4 (CTAF) 0 257.6</b>	<b>121.8</b>
			UNICOM
			<b>122.95</b>



ELEV	<b>7</b>	TDZE	<b>6</b>
------	----------	------	----------



500	2000	JRGAL	VGS1 and descent angles not coincident (VGS1 Angle 4.00/TCH 40).	4 NM Holding Pattern
↑	↷	△		
				JRGAL
				6000
				2000
				176°
				356°
				1600
				3.04°
				TCH 40
				0.9
				4 NM
				5.7 NM
CATEGORY	A	B	C	D
LNAV MDA	540-1	534 (600-1)		NA
CIRCLING	860-1¼	853 (900-1¼)		NA

SE-3, 07 NOV 2019 to 05 DEC 2019

SE-3, 07 NOV 2019 to 05 DEC 2019