

RNAV (RNP) Z RWY 17L

AUSTIN-BERGSTROM INTL (AUS)

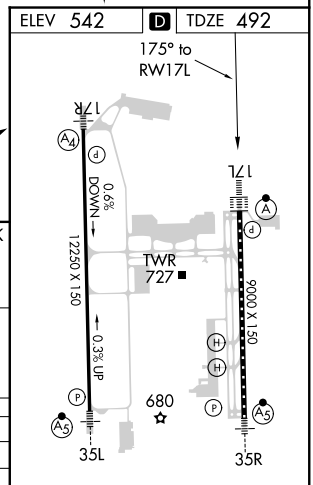
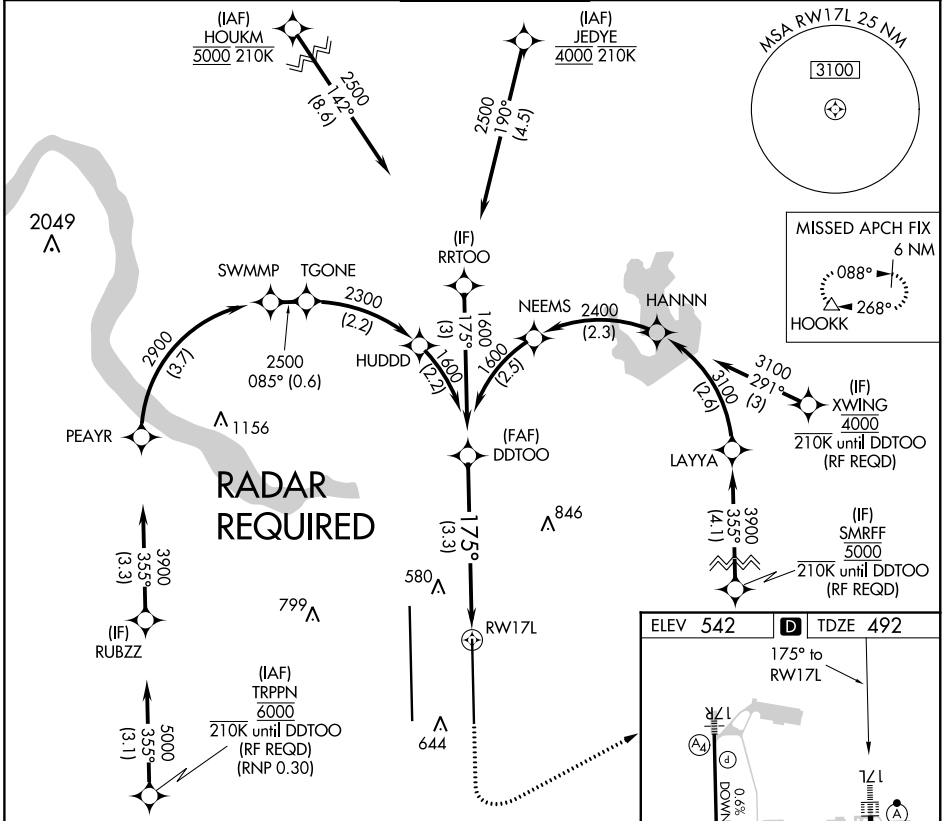
APP CRS	Rwy Idg	9000
175°	TDZE	492
	Apt Elev	542

For uncompensated Baro-VNAV systems, procedure NA below -6°C (22°F) or above 54°C (130°F). Simultaneous approach authorized. GPS required. For inop ALS, increase RNP 0.30 all Cats visibility to 1 1/4 SM.

ALSF-2

MISSED APPROACH: Climb to 1000 then climbing left turn to 3000 direct HOOKK and hold.

D-ATIS	AUSTIN APP CON	AUSTIN TOWER	GND CON	CLNC DEL	CPDLC
124.4	127.225 317.65 (EAST) 120.875 270.25 (SOUTH) 119.0 370.85 (WEST)	121.0 281.5	121.9 348.6	125.5 263.0	



DDTOO 1600 1600

VGSI and RNAV glidepath not coincident (VGSI Angle 3.00/TCH 74).

GP 3.00° TCH 61

See planview for multiple IF locations.

CATEGORY	A	B	C	D
RNP 0.24 DA		830/30	338 (300-3/8)	
RNP 0.30 DA		890/45	398 (400-3/8)	

AUTHORIZATION REQUIRED

SC-3, 07 NOV 2019 to 05 DEC 2019

SC-3, 07 NOV 2019 to 05 DEC 2019