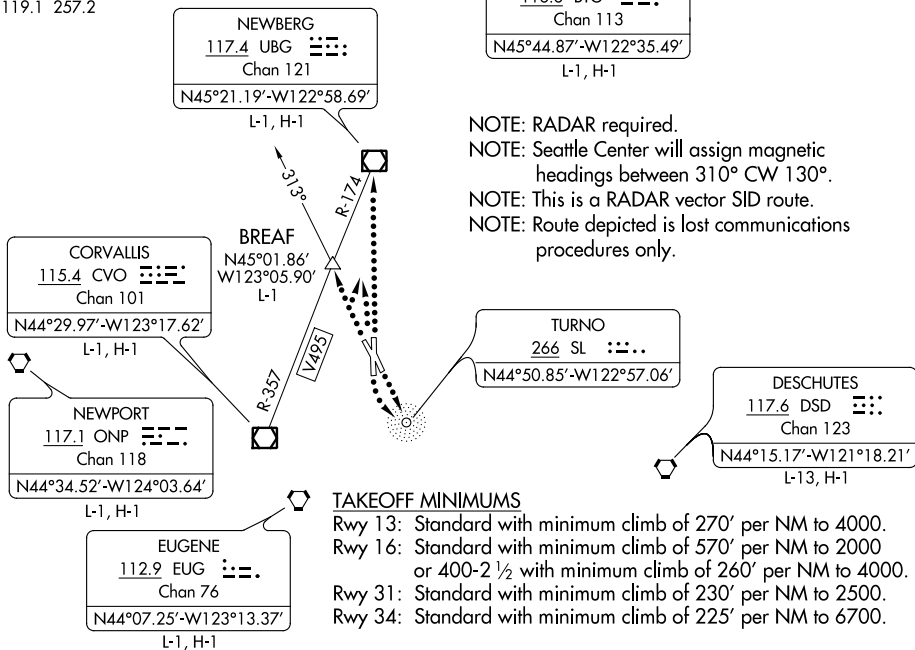


17341
SALEM FOUR DEPARTURE

AL-361 (FAA)

MCNARY FIELD (SL,E)
 SALEM, OREGON

ATIS
 124.55
 GND CON
 121.9
 SALEM TOWER *
 119.1 257.2



TAKEOFF MINIMUMS

- Rwy 13: Standard with minimum climb of 270' per NM to 4000.
- Rwy 16: Standard with minimum climb of 570' per NM to 2000 or 400-2 1/2 with minimum climb of 260' per NM to 4000.
- Rwy 31: Standard with minimum climb of 230' per NM to 2500.
- Rwy 34: Standard with minimum climb of 225' per NM to 6700.

NOTE: Chart not to scale.

DEPARTURE ROUTE DESCRIPTION

TAKEOFF RUNWAYS 13, 31, 34: Climb to assigned altitude and heading between 310° CW 130° from DER, thence

TAKEOFF RUNWAY 16: Climbing left turn to assigned heading between 340° CW to 130° from DER to assigned altitude, thence

. . . . expect RADAR vectors with Seattle Center to assigned route. Expect filed altitude 10 minutes after departure.

LOST COMMUNICATIONS:

If not in contact with Seattle Center after reaching 2000, continue climb to assigned altitude.

TAKEOFF RUNWAYS 13 and 16: (Runway 16 turn left) proceed direct to SL NDB thence on (assigned route) (ADF required).

TAKEOFF RUNWAYS 31 and 34: (Runway 31 turn right) proceed direct to UBG VOR/DME thence on (assigned route).

HELICOPTERS ONLY - RUNWAYS 31 and 34: (Runway 34 turn left) intercept and proceed outbound on the SL NDB 313° bearing to BREAf INT, thence on (assigned route) (ADF required).

SALEM FOUR DEPARTURE

27APR17

SALEM, OREGON
 MCNARY FIELD (SL,E)

NW-1, 07 NOV 2019 to 05 DEC 2019

NW-1, 07 NOV 2019 to 05 DEC 2019