

FORT SILL, OKLAHOMA

VOR RWY 36

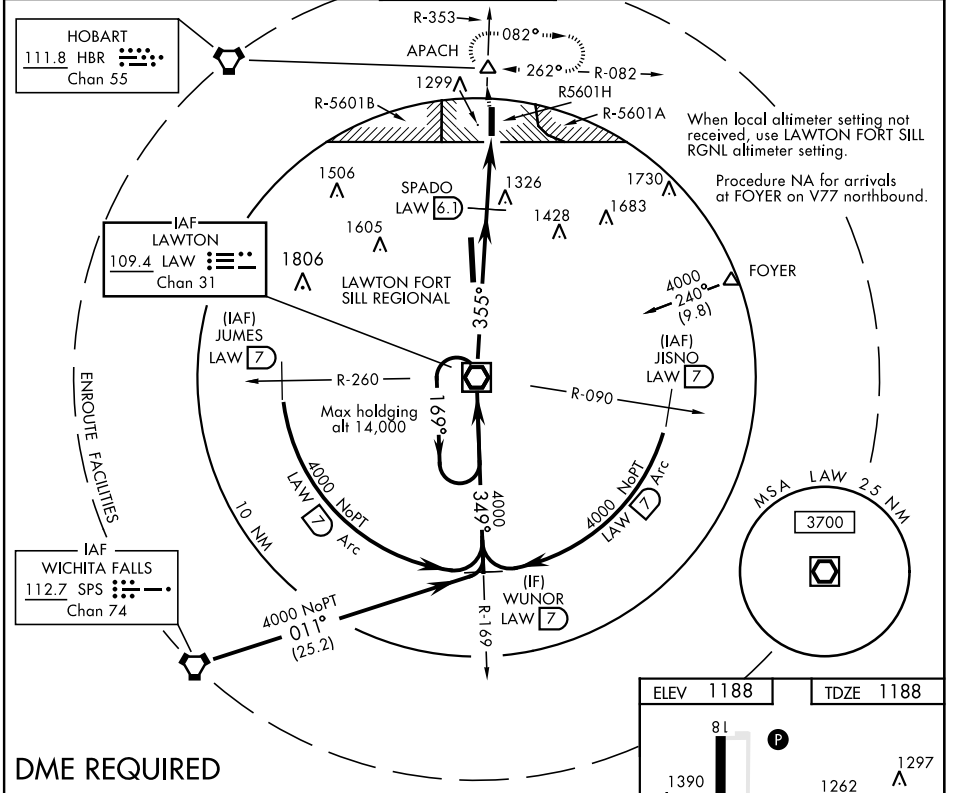
VOR/DME LAW 109.4 Chan 31	APCH CRS 355°	Rwy Idg TDZE Arprt Elev 5001 1188 1188
--	-------------------------	--

AL-230 [USA]

HENRY POST AAF (KFSI)

▼ * When ALS inop, increase CAT CD vis to 1 $\frac{1}{2}$ miles.
▲ MISSED APPROACH: Climb to 4000 on LAW VOR/DME R-353 to APACH INT/LAW 20.9 DME and hold.

ATIS 135.425 354.025	FORT SILL APP CON 120.55 322.4	POST TOWER ★(CTAF) 124.95 229.4	GND CON 121.7 279.575	CLNC DEL 121.7 279.575	ASR
--------------------------------	--	---	---------------------------------	----------------------------------	-----

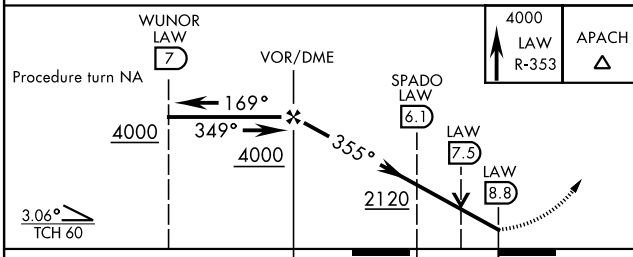


When local altimeter setting not received, use LAWTON FORT SILL RGNL altimeter setting.
 Procedure NA for arrivals at FOYER on V77 northbound.

SC-1, 07 NOV 2019 to 05 DEC 2019

SC-1, 07 NOV 2019 to 05 DEC 2019

DME REQUIRED



ELEV 1188	TDZE 1188
-----------	-----------

HIRL Rwy 18-36
 FAF to MAP 8.8 NM

Knots	60	90	120	150	180
Min:Sec	8:48	5:52	4:24	3:31	2:56

CATEGORY	A	B	C	D
S-35*	1640/40 453 (600- $\frac{3}{4}$)	1640/55 453 (500-1)		
CIRCLING	1680-1 492 (500-1)	1760-1 572 (600-1)	1820-1 $\frac{3}{4}$ 632 (700-1 $\frac{3}{4}$)	1920-2 $\frac{1}{4}$ 732 (800-2 $\frac{1}{4}$)

FORT SILL, OKLAHOMA
Amdt 14 20JUN19

34° 39'N-98° 24'W

HENRY POST AAF (KFSI)

VOR RWY 36