

WAAS CH <b>49242</b> <b>W12A</b>	APP CRS <b>111°</b>	Rwy Idg TDZE Apt Elev	<b>3212</b> <b>280</b> <b>280</b>
--	------------------------	-----------------------------	---

# RNAV (GPS) RWY 12

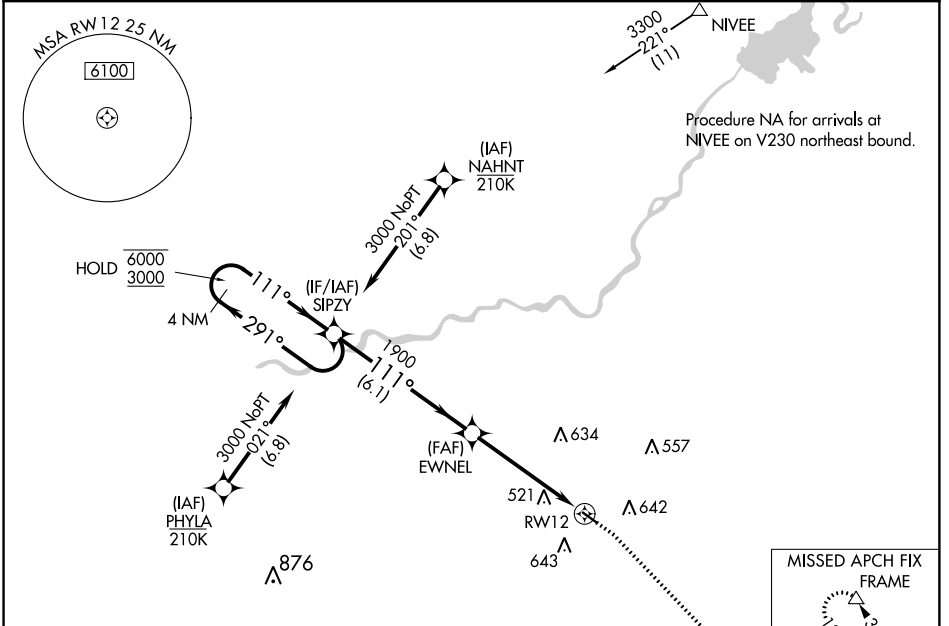
FRESNO CHANDLER EXECUTIVE (FCH)

RNP APCH.

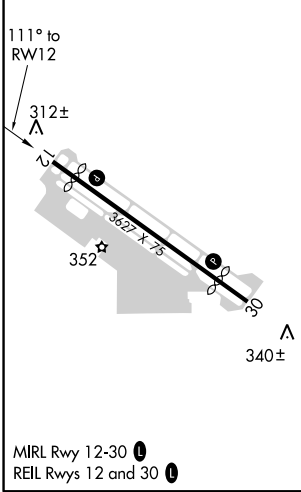
▼ For uncompensated Baro-VNAV systems, LNAV/VNAV NA below -1° C or above 54°C.  
 ▲ Rwy 12 helicopter visibility reduction below 3/4 SM NA.  
 Circling Rwy 30 NA at night.

MISSED APPROACH: Climb to 800 then climbing right turn to 2000 direct FRAME and hold.

AWOS-3 <b>135.225</b>	FRESNO APP CON <b>119.0 323.25</b>	CLNC DEL <b>119.0</b>	UNICOM <b>123.0 (CTAF) 0</b>
--------------------------	---------------------------------------	--------------------------	---------------------------------



ELEV 280	TDZE 280
----------	----------



4 NM Holding Pattern	800	2000	FRAME
SIPZY	↑	↷	△
6000 ← 291°	111° →	111°	
3000			
GP 3.00° TCH 40	EWNEL 1900	*1.4 NM to RWY 12	*LNAV only
	1900		
	6.1 NM	3.6 NM	1.4 NM
△ 340±			

	A	B	C	D
LPV DA	530-3/4		250 (300-3/4)	NA
LNAV/VNAV DA	809-1 1/2		529 (600-1 1/2)	NA
LNAV MDA	780-1	500 (500-1)	780-1 3/8 500 (500-1 3/8)	NA
<b>C</b> CIRCLING	960-1	680 (700-1)	960-2 680 (700-2)	NA

SW-2. 07 NOV 2019 to 05 DEC 2019

SW-2. 07 NOV 2019 to 05 DEC 2019