


LOC I-BGM 110.3	APP CRS 340°	Rwy Idg TDZE Apt Elev	7099 1600 1636
---------------------------	------------------------	-----------------------------	---

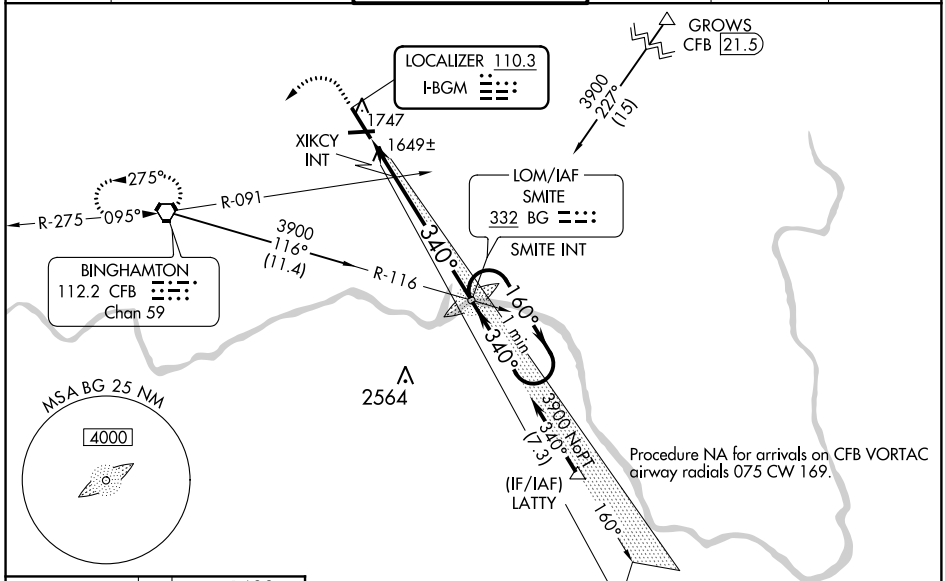
ILS or LOC RWY 34

GREATER BINGHAMTON/EDWIN A. LINK FIELD (BGM)

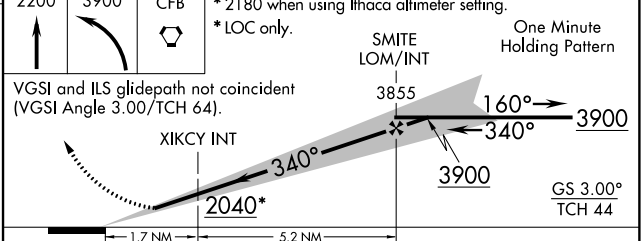
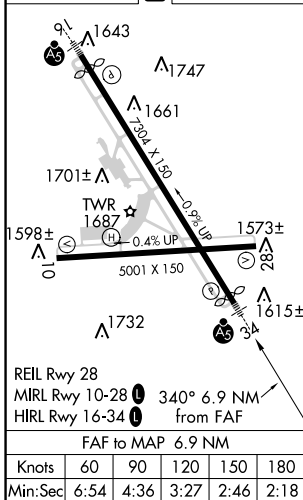
⚠ When local altimeter setting not received, use Ithaca altimeter setting; increase S-ILS 34 DA to 1938 and all Cats visibility 1/2 SM; increase all MDA 140 feet and S-LOC 34 Cats C/D visibility 1/2 SM and Circling Cat C visibility 1/4 SM and Cat D visibility 1/2 SM; increase XIKCY fix minimums S-LOC 34 Cats C/D visibility 1/4 SM. For inoperative ALS increase S-LOC 34 Cats C/D visibility to 1/2 SM and XIKCY fix minimums S-LOC 34 Cats C/D visibility to RVR 5000. For inoperative ALS when using Ithaca altimeter setting, increase S-ILS 34 all Cats visibility to RVR 6000, S-LOC 34 Cats C/D visibility to 1/4 SM, and XIKCY fix minimums S-LOC 34 Cats C/D visibility to 1/2 SM.

MALSRL

MISSED APPROACH:
 Climb to 2200 then climbing left turn to 3900 direct CFB VORTAC and hold, continue climb-in-hold to 3900.

ATIS 128.15	BINGHAMTON APP CON * 118.6 257.625	BINGHAMTON TOWER * 119.3 (CTAF) 0 239.25	GND CON 121.9	CLNC DEL 125.05	UNICOM 122.95
-----------------------	--	--	-------------------------	---------------------------	-------------------------



ELEV 1636 **D** TDZE 1600



CATEGORY	A	B	C	D
S-ILS 34	1800/24 200 (200-1/2)			
S-LOC 34	2040/24	440 (500-1/2)	2040/50	440 (500-1)
C CIRCLING	2120-1	484 (500-1)	2120-1 1/2 484 (500-1 1/2)	2200-2 564 (600-2)
XIKCY FIX MINIMUMS				
S-LOC 34	1940/24	340 (400-1/2)	1940/35	340 (400-3/8)
C CIRCLING	2120-1	484 (500-1)	2120-1 1/2 484 (500-1 1/2)	2200-2 564 (600-2)

BINGHAMTON, NEW YORK
Amdt 4A 21JUN18

GREATER BINGHAMTON/EDWIN A. LINK FIELD (BGM)
42°13'N-75°59'W
ILS or LOC RWY 34

NE-2, 07 NOV 2019 to 05 DEC 2019

NE-2, 07 NOV 2019 to 05 DEC 2019