

WAAS CH 86437 W 30A	APP CRS 299°	Rwy Idg 3300 TDZE 813 Apt Elev 813
---	------------------------	---

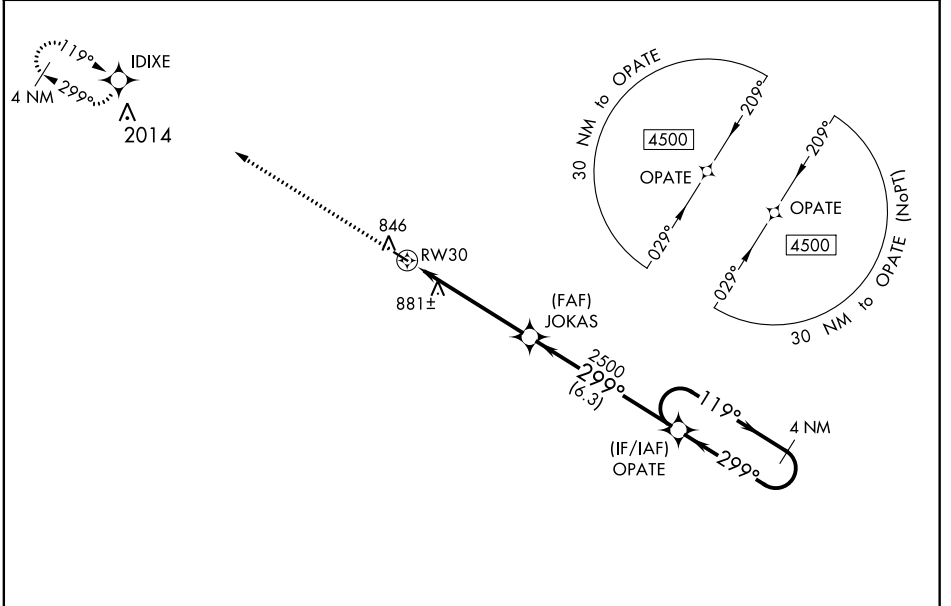
RNAV (GPS) RWY 30

MEMPHIS MEMORIAL (Ø3D)

NA Baro-VNAV NA. DME/DME RNP-0.3 NA. Use Kirksville altimeter setting; when not received, use Keokuk altimeter setting and increase all DA 23 feet and all MDA 40 feet, increase LPV and LNAV/VNAV all Cats visibility 1/8 mile, increase LNAV Cat C and Circling Cat C visibility 1/4 mile. Night Landing: Rwy 30 NA for Cat C aircraft. Helicopter visibility reduction below 3/4 SM NA.

MISSED APPROACH: Climb to 4500 direct IDIXE and hold, continue climb-in-hold to 4500.

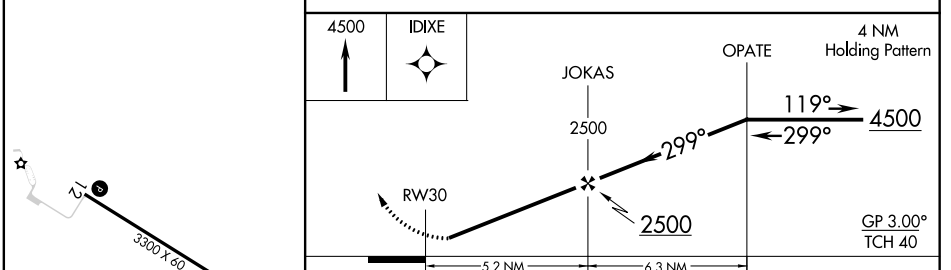
KIRKSVILLE RGNL ASOS 121.125	KANSAS CITY CENTER 126.225 317.775	CTAF 122.9
--	--	----------------------



NC-3, 10 OCT 2019 to 07 NOV 2019

NC-3, 10 OCT 2019 to 07 NOV 2019

ELEV 813	TDZE 813
----------	----------



CATEGORY	A	B	C	D
LPV DA		1144-1 1/8	331 (400-1 1/8)	NA
LNAV/VNAV DA		1144-1 1/8	331 (400-1 1/8)	NA
LNAV MDA	1220-1	407 (500-1)	1220-1 1/8 407 (500-1 1/8)	NA
C CIRCLING	1300-1	487 (500-1)	1400-1 1/2 587 (600-1 1/2)	NA